

CIDE-C Antibody

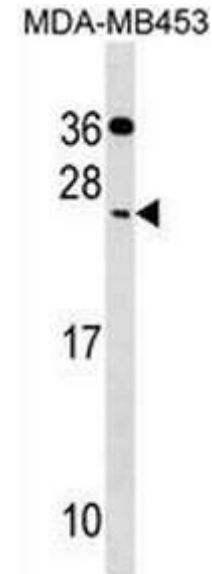
ALTERNATE NAMES:	Cell death activator CIDE-3, Cell death-inducing DFFA-like effector protein C, Fat-specific protein FSP27 homolog, CIDE, FSP27
CATALOG #:	6968-100
AMOUNT:	100 µl
HOST/ISOTYPE:	Rabbit Ig
IMMUNOGEN:	This CIDE antibody is generated from rabbits immunized with a KLH conjugated synthetic peptide between 97-126 amino acids from the Central region of human CIDE.
MOLECULAR WEIGHT:	~26.76 kDa
FORM:	Liquid
FORMULATION:	In PBS with 0.09% (W/V) sodium azide.
PURIFICATION:	This antibody is purified through a protein A column, followed by peptide affinity purification.
SPECIES REACTIVITY:	Human.

STORAGE CONDITIONS: Maintain refrigerated at 2-8°C for up to 6 months. For long term storage, store at -20°C in small aliquots to prevent freeze-thaw cycles.

DESCRIPTION: CIDE binds to lipid droplets and regulates their enlargement, thereby restricting lipolysis and favoring storage. At focal contact sites between lipid droplets, promotes directional net neutral lipid transfer from the smaller to larger lipid droplets. The transfer direction may be driven by the internal pressure difference between the contacting lipid droplet pair. Its role in neutral lipid transfer and lipid droplet enlargement is activated by the interaction with PLIN1. May act as a CEBPB coactivator in the white adipose tissue to control the expression of a subset of CEBPB downstream target genes, including SOCS1, SOCS3, TGFB1, TGFB1, ID2 and XDH. When overexpressed in preadipocytes, induces apoptosis or increases cell susceptibility to apoptosis induced by serum deprivation or TGFB treatment. As mature adipocytes, that express high CIDE levels, are quite resistant to apoptotic stimuli, the physiological significance of its role in apoptosis is unclear. May play a role in the modulation of the response to osmotic stress by preventing NFAT5 to translocate into the nucleus and activate its target genes expression.

APPLICATION: WB: ~1:1000.

Note: This information is only intended as a guide. The optimal dilutions must be determined by the user.



CIDE antibody (Center) western blot analysis in MDA-MB453 cell line lysates (35 µg/lane). This demonstrates the CIDE antibody detected the CIDE protein (arrow).

RELATED PRODUCTS:

- CIDE-A Antibody (Cat # 3209-100)

FOR RESEARCH USE ONLY! Not to be used on humans.