

P-glycoprotein Antibody

ALTERNATE NAMES: P-gp, Multidrug resistance protein 1, MDR1, ATP-binding cassette sub-family B (MDR/TAP) member 1, ABCB1

CATALOG #: 6970-100

AMOUNT: 100 µg/vial

HOST/ISOTYPE: Rabbit IgG, Polyclonal

IMMUNOGEN: Synthetic peptide corresponding to amino acids around position 630 of human P-glycoprotein

MOL. WEIGHT: 170 kDa

FORM: Lyophilized

FORMULATION: Each vial contains 5mg BSA, 0.9 mg NaCl, 0.2 mg Na₂HPO₄, 0.05 mg NaN₃

RECONSTITUTION: 0.2 ml of deionized water will yield a 0.5 mg/ml antibody solution

PURIFICATION: Immunogen affinity-purified

SPECIES REACTIVITY: Human, Mouse, Rat.

STORAGE CONDITIONS: Store lyophilized at -20°C for one year. After reconstitution, store at 4°C for 1 month. For long term storage of the reconstituted form, store at -20°C in small aliquots to prevent freeze-thaw cycles.

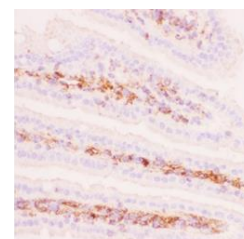
DESCRIPTION: P-gp, also called MDR1 or ABCB1, is a glycoprotein that in humans is encoded by the ABCB1 gene. P-gp is a well-characterized ABC-transporter (which transports a wide variety of xenobiotics across extra- and intracellular membranes). It is an ATP-dependent drug efflux pump with broad substrate specificity. It is responsible for decreased drug accumulation in multidrug-resistant cells and often mediates the development of resistance to anticancer drugs. This protein functions in the kidneys, liver, blood-brain barrier and the intestinal epithelium.

APPLICATION: We suggest starting with 0.5-1 µg/ml** for IHC-P* or IHC-F Other applications are possible but have not been tested.

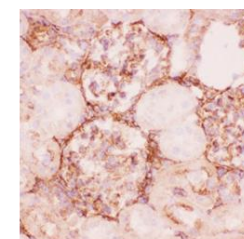
***Note:** Boiling the paraffin sections in 10 mM citrate buffer, pH 6.0, for 20 mins is required for staining formalin/paraffin sections.

****Note:** This information is only intended as a guide. The optimal dilutions must be determined by the user.

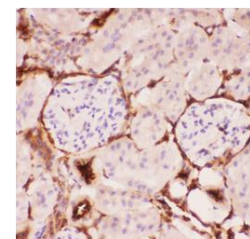
FOR RESEARCH USE ONLY! Not to be used on humans.



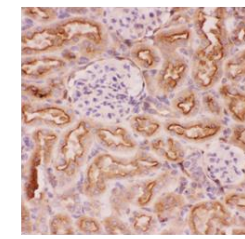
IHC(F): Mouse Intestine



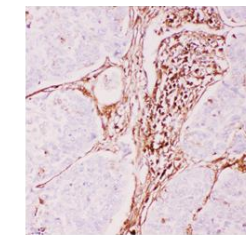
IHC(F): Rat Kidney



IHC(P): Mouse Kidney



IHC(P): Rat Kidney



IHC(P): Human Lung Cancer

RELATED PRODUCTS:

BCRP Antibody (Cat # 6971-100)

ABCG1 Antibody (Center) (Cat # 6705-100)

ABCG1 Antibody (NT) (Cat # 6704-100)

