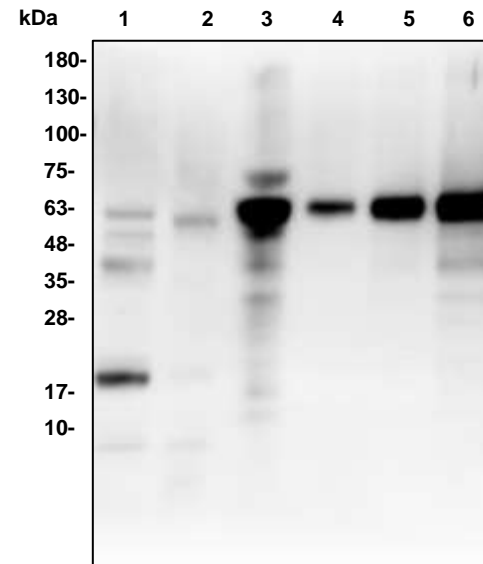


Alpha1 Antitrypsin Antibody

ALTERNATE NAMES:	Alpha-1 protease inhibitor, Alpha-1-antiproteinase, Serpin A1, AAT, PI
CATALOG #:	7009-30T 30 µg (Trial size) 7009-100 100 µg
HOST:	Rabbit
IMMUNOGEN:	Human alpha1 antitrypsin (Cat No 7294)
INTERNAL ID:	BV-P49
PURIFICATION:	Affinity purified rabbit IgG
FORM:	Liquid
FORMULATION:	0.5 mg/ml of antibody in PBS pH 7.2, 0.01% BSA, 0.03% ProClin® and 50% glycerol.
SPECIES REACTIVITY:	Human, Mouse, Rat
STORAGE CONDITIONS:	Store at -20°C. Avoid repeated freeze/thaw cycles.
DESCRIPTION:	Alpha 1 Antitrypsin is an acute-phase plasma protein found at 290 mg per 100 ml. It functions as a serine protease inhibitor with targets like elastase, plasmin, collagenase, thrombin, leucocyte proteases, trypsin, chymotrypsin, and plasminogen activator. Clinically, its deficiency is associated with two major diseases: pulmonary emphysema and early onset/juvenile hepatic cirrhosis. It is elevated in inflammatory conditions, malignancies, liver disease and pregnancy and also after surgical trauma and use of oral contraceptives. The simultaneous quantitative determination of alpha-1-PI and ceruloplasmin permits differential diagnosis of liver afflictions. Rise in alpha 1 antitrypsin occurs as an acute phase response to tissue necrosis and inflammation.
APPLICATION:	Western blot: 1-4 µg

Note: This information is only intended as a guide. The optimal dilutions must be determined by the user.



Western blot with human alpha1 antitrypsin antibody:

Lane 1: 22 µg m muscle
Lane 2: 60 µg rat kidney
Lane 3: 1 µg human serum
Lane 4: 2 ng h alpha1 antitrypsin
Lane 5: 10 ng h alpha1 antitrypsin
Lane 6: 50 ng h alpha1 antitrypsin

RELATED PRODUCTS:

- Alpha 1 Antitrypsin, Human Plasma (**Cat. No. 7294-1000**)
- Trypsin Activity Colorimetric Assay Kit (**Cat. No. K771-100**)
- Trypsin, Human pancreas (**Cat. No. 7292-50**)
- Alpha 1 Antichymotrypsin, Human Plasma (**Cat. No. 7293-100**)
- Serpin E1/PAI-1, human recombinant, (**Cat. No. 4731-10, -100, -1000**)
- Human CellExp™ SERPINA1 /A1AT, human recombinant, (**Cat. No. 7235-10**)
- Serpin A6 Antibody (**Cat. No. 3906-100**)
- Serpin A6 Blocking Peptide (**Cat. No. 3906BP-100**)
- Neuroserpin, human recombinant, (**Cat. No. 7181-10, -50**)

FOR RESEARCH USE ONLY! Not to be used in humans.