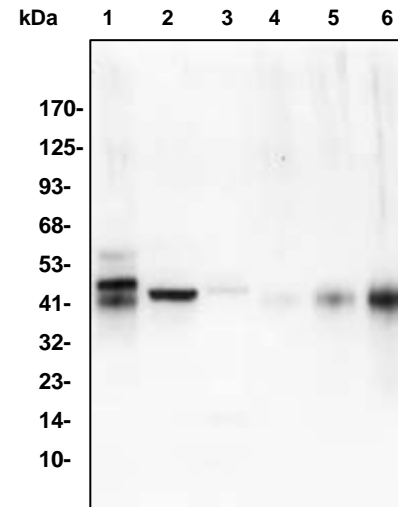


# Alpha 1 Acid Glycoprotein Antibody

<b>ALTERNATE NAMES:</b>	AGP, Orosomucoid
<b>CATALOG NO:</b>	7010-30T 30 µg (Trial size) 7010-100 100 µg
<b>HOST:</b>	Rabbit
<b>IMMUNOGEN:</b>	Human alpha 1 Acid Glycoprotein (Cat. No. 7547)
<b>INTERNAL ID:</b>	BV-P84
<b>PURIFICATION:</b>	Affinity purified rabbit IgG
<b>FORM:</b>	Liquid
<b>FORMULATION:</b>	0.5 mg/ml of antibody in PBS pH 7.2, 0.01% BSA, 0.03% ProClin® and 50 % glycerol.
<b>SPECIES REACTIVITY:</b>	Human, mouse, rat.
<b>STORAGE CONDITIONS:</b>	Store at -20°C. Avoid repeated freeze/thaw cycles.
<b>DESCRIPTION:</b>	Found in human plasma in concentrations of 55-140 mg per 100 ml. Classical standard glycoprotein for studies on the structure of the oligosaccharide units. Carbohydrate content is 40%. Its biological significance is unknown although it can bind progesterone 15 times as strongly as albumin. Sialic-acid-deficient alpha-1-AG has an affinity for vitamin B-12. Clinically, alpha 1 acid glycoprotein is an acute-phase reactant that together with haptoglobin is an indicator of acute inflammation. The alpha 1 acid glycoprotein: haptoglobin ratio is useful in studies of bone marrow disorders, hemolytic processes and metastases.
<b>APPLICATION:</b>	Western blot: 1-4 µg

**Note:** This information is only intended as a guide. The optimal dilutions must be determined by the user.



#### Western blot with human alpha 1 Acid Glycoprotein antibody:

Lane 1: human serum - 1 µg.  
Lane 2: mouse muscle - 33 µg.  
Lane 3: rat kidney - 30 µg.  
Lane 4: human alpha 1 Acid Glycoprotein (Cat # 7547) - 2 ng.  
Lane 5: human alpha 1 Acid Glycoprotein (Cat # 7547) - 10 ng.  
Lane 6: human alpha 1 Acid Glycoprotein (Cat # 7547) - 50 ng.

#### RELATED PRODUCTS:

- Alpha 1 Acid Glycoprotein, Human Plasma (**Cat. No. 7547-1**)
- Alpha 2 Acid Glycoprotein, Human Plasma (**Cat. No. 7548-1**)

**FOR RESEARCH USE ONLY! Not to be used on humans.**