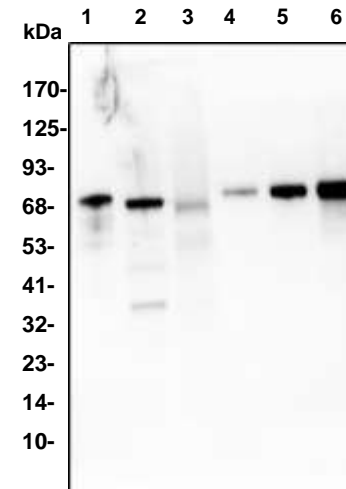


Transferrin Antibody

ALTERNATE NAMES:	Transferrin, Siderophilin, TF, DKFZp781D0156, PRO1557, PRO2086
CATALOG NO:	7012-30T 30 µg (Trial size) 7012-100 100 µg
HOST:	Rabbit
IMMUNOGEN:	Human Transferrin (Cat. No. 7542)
INTERNAL ID:	BV-P99
PURIFICATION:	Affinity purified rabbit IgG
FORM:	Liquid
FORMULATION:	0.5 mg/ml of antibody in PBS pH 7.2, 0.01 % BSA, 0.03 % ProClin® and 50 % glycerol.
SPECIES REACTIVITY:	Human, mouse, rat.
STORAGE CONDITIONS:	Store at -20°C. Avoid repeated freeze/thaw cycles.
DESCRIPTION:	Transferrin is a monomeric glycoprotein found in plasma at an average concentration of 250 mg/100ml. The specific iron-binding protein in plasma, it has a role in the transportation and distribution of iron among the body organs, in iron metabolism and in prevention of iron loss via the kidney. Stored in bone marrow as TF-bound iron, it also possesses bacteriostatic and fungistatic activity. Clinically, decreases in transferrin are observed in congenital disorders, newborns, inflammatory diseases, hypo-proteinemias and nephritic syndrome; increases are found in pregnancy, iron-deficiency anemias and inoculation hepatitis. Transferrin is required by all types of cells in cultures for maximal growth. It is, therefore, an important factor used in defined culture media.
APPLICATION:	Western blot: 1-4 µg

Note: This information is only intended as a guide. The optimal dilutions must be determined by the user.



Western blot with human Transferrin antibody:

Lane 1: human serum - 0.2 µg.
Lane 2: mouse muscle lysate - 33 µg.
Lane 3: rat kidney lysate - 30 µg.
Lane 4: human Transferrin (Cat # 7542) - 2 ng.
Lane 5: human Transferrin (Cat # 7542) - 10 ng.
Lane 6: human Transferrin (Cat # 7542) - 50 ng.

RELATED PRODUCTS:

- Transferrin (HOLO), Human Plasma (Cat # 7542-100, -500)
- Apotransferrin, Human Plasma (Cat # 4707-100)
- Apotransferrin, Mouse Plasma (Cat # 7540-1000)
- Apotransferrin, Rat Plasma (Cat # 7541-1000)
- Transferrin, Rat Plasma (Cat # 7543-1000)
- Human CellExp™ Transferrin, human recombinant (Cat # 7467-20, -100)
- Lactoferrin, Human Milk (Cat # 7550-10)
- Lactoferrin, Human Neutrophil (Cat # 4092-100)

FOR RESEARCH USE ONLY! Not to be used on humans.