

# Hemopexin Polyclonal Antibody

**CATALOG NO :** 7016-30T 30 µg (Trial size)  
7016-100 100 µg

**ALTERNATE NAMES:** HPX, Beta-1B-glycoprotein, Beta-1B-glycoprotein

**CONCENTRATION:** 0.5 mg/mL

**HOST:** Rabbit

**IMMUNOGEN:** human Hemopexin (Cat. No. 7544)

**INTERNAL ID:** BV-P81

**PURIFICATION:** Affinity purified rabbit IgG

**MOLECULAR WEIGHT:** ~57.6 kDa

**FORM:** Liquid

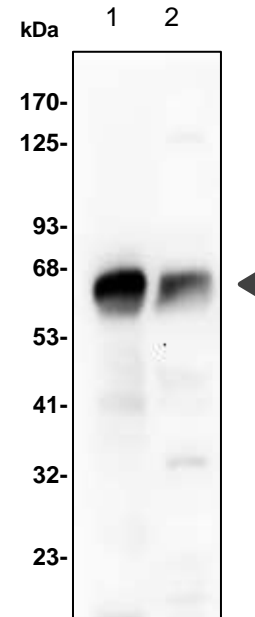
**FORMULATION:** Supplied in PBS (pH 7.2) with 0.01 % BSA, 0.03 % ProClin® and 50 % glycerol

**SPECIES REACTIVITY:** Human, Mouse, also bind weakly in rat

**STORAGE CONDITIONS:** Store at -20°C. Avoid repeated freeze/thaw cycles.

**DESCRIPTION:** Hemopexin is a single-chain protein belonging to the family of blood transport proteins. It binds to heme released into the bloodstream during the degradation process. Recent studies have demonstrated that hemopexin acts as an extracellular antioxidant against hemoglobin-mediated damage in inflammation. Hemopexin protects against heme toxicity and conserves and recycles iron. Abnormal levels of hemopexin are associated with hemolytic anemia, chronic neuromuscular disease, and acute intermittent porphyria.

**APPLICATION:** Western blot: 1-4 µg/ml



**Western blot analysis of Hemopexin using anti-Hemopexin antibody:**

Lane 1: human serum  
Lane 2: mouse muscle lysate

**RELATED PRODUCTS:**

- Hemopexin, Human Plasma (Cat. No. 7544-1000)
- Hemopexin Antibody (Cat. No. 3899-200)
- Hemopexin, Rat Serum (Cat. No. 7545-100)

**Note:** This information is only intended as a guide. The optimal dilutions must be determined by the user.

**FOR RESEARCH USE ONLY! Not to be used on humans.**

