

Haptoglobin Polyclonal Antibody

CATALOG NO: 7017-30T 30 µg (Trial size)
7017-100 100 µg

ALTERNATE NAMES: HP, BP, HPA1S, HP2ALPHA2, Zonulin

CONCENTRATION: 0.5 mg/ml

HOST: Rabbit

IMMUNOGEN: human Haptoglobin (Cat. No. 7536)

INTERNAL ID: BV-P98

PURIFICATION: Affinity purified rabbit IgG

MOLECULAR WEIGHT: ~45 kDa

FORM: Liquid

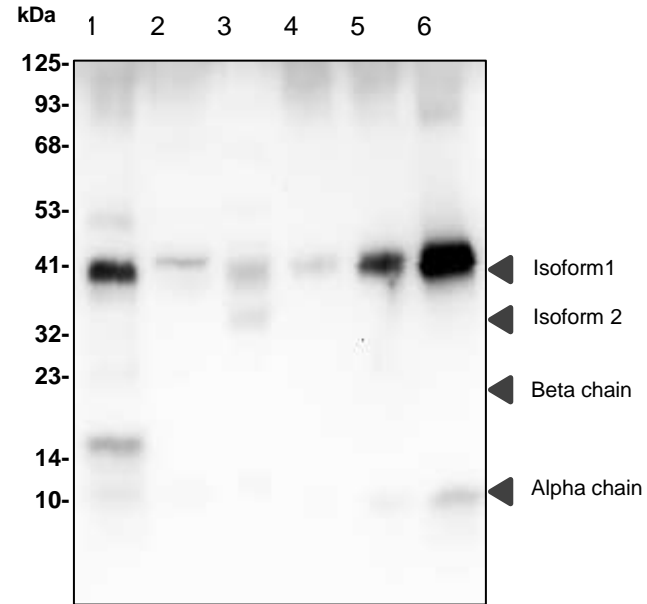
FORMULATION: Supplied in PBS (pH 7.2) with 0.01 % BSA, 0.03 % ProClin® and 50 % glycerol

SPECIES REACTIVITY: Human, also bind weakly in mouse, rat

STORAGE CONDITIONS: Store at -20°C. Avoid repeated freeze/thaw cycles.

DESCRIPTION: As a result of hemolysis, hemoglobin is found to accumulate in the kidney and is secreted in the urine. Haptoglobin captures, and combines with free plasma hemoglobin to allow hepatic recycling of heme iron and to prevent kidney damage. Haptoglobin also acts as an Antimicrobial; Antioxidant, has antibacterial activity and plays a role in modulating many aspects of the acute phase response. Hemoglobin/haptoglobin complexes are rapidly cleared by the macrophage CD163 scavenger receptor expressed on the surface of liver Kupfer cells through an endocytic lysosomal degradation pathway. Uncleaved haptoglobin, also known as zonulin, plays a role in intestinal permeability, allowing intercellular tight junction disassembly, and controlling the equilibrium between tolerance and immunity to non-self antigens.

APPLICATION: Western blot: 1-4 µg/ml
Note: This information is only intended as a guide. The optimal dilutions must be determined by the user.



Western blot analysis of Haptoglobin using anti-Haptoglobin antibody:

Lane 1: human serum
 Lane 2: mouse muscle lysate
 Lane 3: rat kidney lysate
 Lane 4: 2 ng human Haptoglobin (Cat. No. 7535)
 Lane 5: 10 ng human Haptoglobin (Cat. No. 7536)
 Lane 6: 50 ng human Haptoglobin (Cat. No. 7537)

RELATED PRODUCTS:

- Haptoglobin, Human Plasma (Mixed Type) (Cat. No. 7535-1)
- Haptoglobin, (Phenotype 1-1) Human Plasma (Cat. No. 7536-1)
- Haptoglobin, (Phenotype 2-2) Human Plasma (Cat. No. 7537-1)

FOR RESEARCH USE ONLY! Not to be used on humans.



