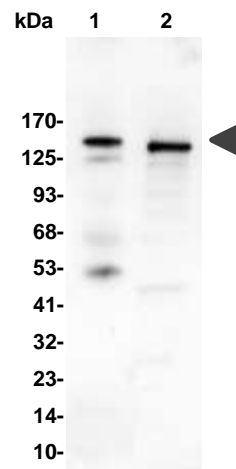


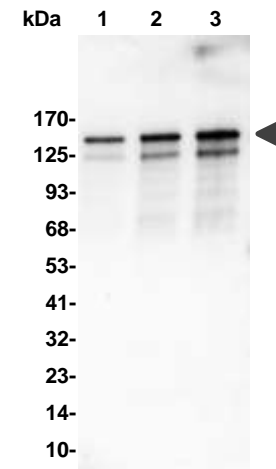
## Ceruloplasmin Antibody

<b>CATALOG NO:</b>	7019-30T      30 µg (Trial size) 7019-100      100 µg
<b>ALTERNATE NAMES:</b>	Ferroxidase, CP, CP-2
<b>CONCENTRATION:</b>	0.5 mg/ml
<b>HOST:</b>	Rabbit
<b>IMMUNOGEN:</b>	human ceruloplasmin (Cat No. 4096)
<b>INTERNAL ID:</b>	BV-P34
<b>PURIFICATION:</b>	Affinity purified rabbit IgG
<b>MOLECULAR WEIGHT:</b>	~132 kDa
<b>FORM:</b>	Liquid
<b>FORMULATION:</b>	Supplied in PBS (pH 7.2) with 0.01 % BSA, 0.03 % ProClin® and 50 % glycerol
<b>SPECIES REACTIVITY:</b>	Human, Mouse, Rat
<b>STORAGE CONDITIONS:</b>	Store at -20°C. Avoid repeated freeze/thaw cycles.
<b>DESCRIPTION:</b>	Ceruloplasmin is a blue, copper-binding (6-7 atoms per molecule) glycoprotein. It has ferroxidase activity oxidizing Fe <sup>2+</sup> to Fe <sup>3+</sup> without releasing radical oxygen species. It is involved in iron transport across the cell membrane. Provides Cu <sup>2+</sup> ions for the ascorbate-mediated deaminase degradation of the heparan sulfate chains of GPC1. May also play a role in fetal lung development or pulmonary antioxidant defense
<b>APPLICATION:</b>	Western blot: 1-4 µg/ml

**Note:** This information is only intended as a guide. The optimal dilutions must be determined by the user.



Western blot analysis of anti-Ceruloplasmin pAb in human serum and rat kidney. Ceruloplasmin (arrow) was detected using the purified antibody.



Dose-dependent western blot analysis of anti-Ceruloplasmin pAb using Ceruloplasmin protein  
Lane 1: 2 ng human ceruloplasmin protein  
Lane 2: 5 ng human ceruloplasmin protein  
Lane 3: 10 ng human ceruloplasmin protein

### RELATED PRODUCTS:

- Ceruloplasmin, Human Plasma (Cat. No. 4096-1000)
- Ceruloplasmin Activity Colorimetric Assay Kit (Cat No. K669-100)

**FOR RESEARCH USE ONLY! Not to be used on humans.**