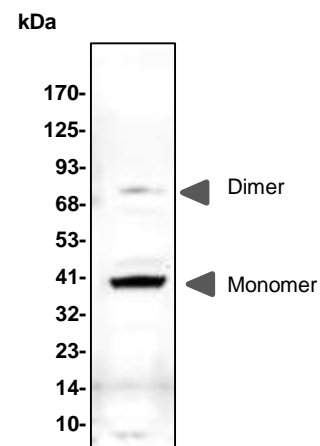


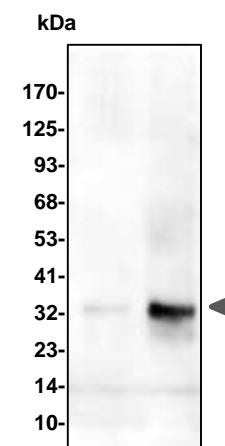
## IGFBP5 Antibody

<b>CATALOG NO:</b>	7020-30T      30 µg (Trial size) 7020-100      100 µg
<b>ALTERNATE NAMES:</b>	Insulin-like growth factor binding protein 5, IBP-5, IGF-binding protein 5, IGFBP-5
<b>CONCENTRATION:</b>	0.5 mg/ml
<b>HOST:</b>	Rabbit
<b>IMMUNOGEN:</b>	human IGF-BP5 (Cat # 4723)
<b>INTERNAL ID:</b>	BV-P42
<b>PURIFICATION:</b>	Affinity purified rabbit IgG
<b>MOLECULAR WEIGHT:</b>	~31 kDa
<b>FORM:</b>	Liquid
<b>FORMULATION:</b>	Supplied in PBS (pH 7.2) with 0.01 % BSA, 0.03 % ProClin®, and 50 % glycerol
<b>SPECIES REACTIVITY:</b>	Human, Mouse, also bind weakly in rat
<b>STORAGE CONDITIONS:</b>	Store at -20°C. Avoid repeated freeze/thaw cycles.
<b>DESCRIPTION:</b>	IGF-binding proteins prolong the half-life of the IGFs and have been shown to either inhibit or stimulate the growth promoting effects of the IGFs on cell culture. They alter the interaction of IGFs with their cell surface receptors.
<b>APPLICATION:</b>	Western blot: 1-4 µg/ml

**Note:** This information is only intended as a guide. The optimal dilutions must be determined by the user



Western blot analysis of anti-IGFBP5 pAb in rat kidney lysate. Both monomer and dimer forms of IGFBP5 (arrows) were detected



Western blot analysis of anti-IGFBP5 pAb using recombinant human IGFBP5:  
Lane 1: 10 ng  
Lane 2: 50 ng

### RELATED PRODUCTS:

- IGF-BP5 Antibody (Cat. No. 5723-100)
- IGF-BP5, human recombinant (Cat. No. 4723-25, 100, 1000)

**FOR RESEARCH USE ONLY! Not to be used on humans.**