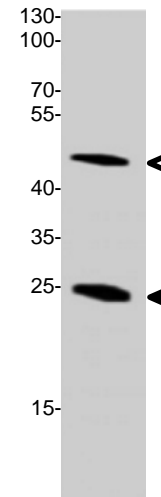


## Cleaved-Caspase-1 Antibody

|                            |   |
|----------------------------|---|
| <b>ALTERNATE NAMES:</b>    | CASP-1, Interleukin-1 beta convertase, IL-1BC, Interleukin-1 beta-converting enzyme, ICE, IL-1 beta-converting enzyme, p45, IL1BC, IL1BCE, CASP1  |
| <b>CATALOG NO. :</b>       | A1004-50  |
| <b>AMOUNT:</b>             | 50 µl (1 mg/ml)   |
| <b>HOST:</b>               | Rabbit  |
| <b>IMMUNOGEN:</b>          | Synthesized peptide derived from human Caspase-1 between Ser 129 - Asn 205  |
| <b>PURIFICATION:</b>       | Affinity purified rabbit IgG  |
| <b>MOLECULAR WEIGHT:</b>   | 25 kDa for cleaved-form, 45 kDa for native form   |
| <b>FORM:</b>               | Liquid  |
| <b>FORMULATION:</b>        | Supplied in PBS containing 50% glycerol, 0.5% BSA and 0.02% sodium azide.   |
| <b>SPECIES REACTIVITY:</b> | Human   |
| <b>STORAGE CONDITIONS:</b> | Store at -20°C. Avoid repeated freeze/thaw cycles.  |
| <b>DESCRIPTION:</b>        | Thiol protease that cleaves IL-1 beta between an Asp and an Ala, releasing the mature cytokine which is involved in a variety of inflammatory processes. Important for defense against pathogens. Cleaves and activates sterol regulatory element binding proteins (SREBPs). Can also promote apoptosis. Cleaved-caspase-1 (D210) detects levels of fragment of activated Caspase-1 protein resulting from cleavage adjacent to D210. |
| <b>APPLICATION:</b>        | WB 1:500-1:2000; IHC 1:100-1:300; ELISA 1:10000   |



Western Blot analysis of anti-cleaved-caspase-1 with 3T3 cell lysate. Native form (hollow arrow) and cleaved form (filled arrow) of caspase-1 was detected using the purified antibody.

### RELATED PRODUCTS:

- Caspase-1 Antibody (Cat No. 3019-100)
- Caspase-1 Blocking Peptide (Cat No. 3019BP-50)
- Caspase-1 Colorimetric Assay Kit (Cat No. K111-25, -100, -200, -400)
- Caspase-1 Fluorometric Assay Kit (Cat No. K110-25, -100, -200, -400)
- Caspase-1 Inhibitor Drug Screening Kit (Fluorometric) (Cat No. K151-100)
- Caspase-1 Inhibitor Z-YVAD-FMK (Cat No. 1012-100, -200)
- Caspase-1 Substrate YVAD-AFC (Cat No. 1103-200, -1000)
- Caspase-1 Substrate YVAD-pNA (Cat No. 1104-200, -1000)
- Caspase-1, human recombinant (Cat No. 1081-25, -100)
- Caspase-1, mouse recombinant (Cat No. 1181-25, -100)
- Active Caspase-1, rat recombinant (Cat No. 7524-25, -100)
- Caspase 1 Antibody (Cat No. 6687-100)

**Note:** This information is only intended as a guide. The optimal dilutions must be determined by the user.

**FOR RESEARCH USE ONLY! Not to be used on humans.**