

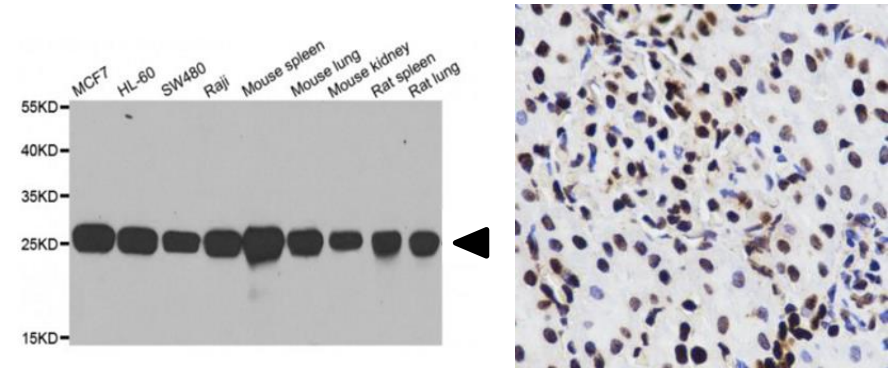
HMGB1 Antibody

ALTERNATE NAMES:	High mobility group protein B1, High mobility group protein 1, HMG-1, HMG3, SBP-1
CATALOG NO. :	A1005-50
AMOUNT:	50 µl (1 mg/ml)
HOST:	Rabbit
IMMUNOGEN:	Recombinant protein of human HMGB1
PURIFICATION:	Affinity purified rabbit IgG
MOLECULAR WEIGHT:	25 kDa
FORM:	Liquid
FORMULATION:	Supplied in PBS containing 50% glycerol and 0.02% sodium azide.
SPECIES REACTIVITY:	Human, Mouse, Rat
STORAGE CONDITIONS:	Store at -20°C. Avoid repeated freeze/thaw cycles.

DESCRIPTION: Multifunctional redox sensitive protein with various roles in different cellular compartments. In the nucleus is one of the major chromatin-associated non-histone proteins and acts as a DNA chaperone involved in replication, transcription, chromatin remodeling, V(D)J recombination, DNA repair and genome stability. Proposed to be an universal biosensor for nucleic acids. Promotes host inflammatory response to sterile and infectious signals and is involved in the coordination and integration of innate and adaptive immune responses. In the cytoplasm functions as sensor and/or chaperone for immunogenic nucleic acids implicating the activation of TLR9-mediated immune responses, and mediates autophagy. Acts as danger associated molecular pattern (DAMP) molecule that amplifies immune responses during tissue injury. Released to the extracellular environment can bind DNA, nucleosomes, IL-1 beta, CXCL12, AGER isoform 2/sRAGE, lipopolysaccharide (LPS) and lipoteichoic acid (LTA), and activates cells through engagement of multiple surface receptors. In the extracellular compartment fully reduced HMGB1 (released by necrosis) acts as a chemokine, disulfide HMGB1 (actively secreted) as a cytokine, and sulfonyl HMGB1 (released from apoptotic cells) promotes immunological tolerance.

APPLICATION: WB 1:500-1:2000; IHC 1:50-1:200; IF 1:50-1:200

Note: This information is only intended as a guide. The optimal dilutions must be determined by the user.



Western Blot analysis of anti-HMGB1 antibody with various cell and tissue lysates. HMGB1 (arrow) was detected using the purified antibody.

IHC analysis of anti-HMGB1 antibody with rat kidney tissue. HMGB1 was detected using the purified antibody.

RELATED PRODUCTS:

- Human CellExp™ HMGB1 /HMG1, human recombinant (Cat. No. 7240-10)
- IL-1 beta Antibody (Cat. No. 5129-100)
- IL-1 beta Antibody (Cat. No. 5128-100)
- IL-1beta, human recombinant (Cat. No.4128-10, -50, -1000)
- IL-1beta, murine recombinant (Cat. No.4129-10, -50, 1000)
- IL-1β (human) ELISA Kit (Cat. No.K4794-100)
- IL-1β (mouse) ELISA Kit (Cat. No.K4795-100)
- CXCL2, human recombinant (Cat. No.7306-100)
- SDF-1α/CXCL2, rat recombinant (Cat. No.7199-10, -50)
- SDF-1β/CXCL2, rat recombinant (Cat. No.7200-10, -50)

FOR RESEARCH USE ONLY! Not to be used on humans.