

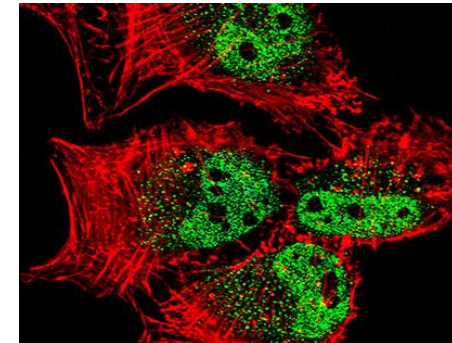
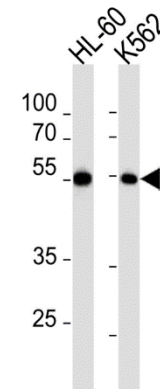
MEF2C Antibody

ALTERNATE NAMES:	Myocyte-specific enhancer factor 2C, MEF2C
CATALOG NO. :	A1006-100
AMOUNT:	100 µl
HOST:	Rabbit
CLONALITY:	Polyclonal
IMMUNOGEN:	synthetic human MEF2C peptide (Gln 365 – Asp 400)
PURIFICATION:	Affinity purified rabbit IgG
MOLECULAR WEIGHT:	51 kDa
FORM:	Liquid
FORMULATION:	Supplied in PBS with 0.09% (W/V) sodium azide.
SPECIES REACTIVITY:	Human
STORAGE CONDITIONS:	Store at -20°C. Avoid repeated freeze/thaw cycles.

DESCRIPTION: Transcription activator which binds specifically to the MEF2 element present in the regulatory regions of many muscle-specific genes. Controls cardiac morphogenesis and myogenesis, and is also involved in vascular development. Plays an essential role in hippocampal-dependent learning and memory by suppressing the number of excitatory synapses and thus regulating basal and evoked synaptic transmission. Crucial for normal neuronal development, distribution, and electrical activity in the neocortex. Necessary for proper development of megakaryocytes and platelets and for bone marrow B-lymphopoiesis. Required for B-cell survival and proliferation in response to BCR stimulation, efficient IgG1 antibody responses to T-cell-dependent antigens and for normal induction of germinal center B-cells. May also be involved in neurogenesis and in the development of cortical architecture. Isoform 3 and isoform 4, which lack the repressor domain, are more active than isoform 1 and isoform 2.

Note: This information is only intended as a guide. The optimal dilutions must be determined by the user.

APPLICATION: Western Blot 1:1000
Immunofluorescent staining 1:10~50
Immunohistochemistry 1:10~50



Western blot and immunofluorescent analysis of MEF2C using anti- MEF2C antibody.

(Left) Western blot analysis in HL-60, K562 cell line lysates. MEF2C (arrow) was detected using the purified antibody. (Right) Fluorescent confocal image of HeLa cell stained with MEF2C Antibody (green) and cytoplasmic actin (red). MEF2C immunoreactivity is localized to vesicles and nucleus.

RELATED PRODUCTS:

- Erk5 Antibody (Cat. No. 3397-100)
- HDAC7 Antibody (Cat. No. 3607-100)
- HDAC7 Blocking Peptide (Cat. No. 3607BP-50)
- Phospho-p38 MAPK Antibody (Cat. No. 3438-100)

FOR RESEARCH USE ONLY! Not to be used on humans.