

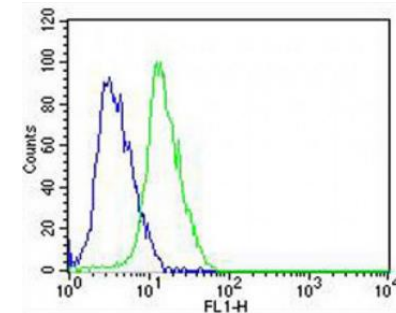
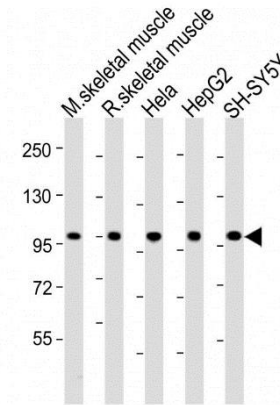
LGR5 Antibody

ALTERNATE NAMES:	Leucine-rich repeat-containing G-protein coupled receptor 5, G-protein coupled receptor 49, G-protein coupled receptor 67, G-protein coupled receptor HG38, GPR49, GPR67
CATALOG NO. :	A1007-100
AMOUNT:	100 µl
HOST:	Rabbit
IMMUNOGEN:	synthetic human LGR5 peptide (Ile685 - Pro720)
PURIFICATION:	Affinity purified rabbit IgG
MOLECULAR WEIGHT:	100 kDa
FORM:	Liquid
FORMULATION:	Supplied in PBS with 0.09% (W/V) sodium azide
SPECIES REACTIVITY:	Human, Mouse, Rat
STORAGE CONDITIONS:	Store at -20°C. Avoid repeated freeze/thaw cycles.

DESCRIPTION: Receptor for R-spondins that potentiates the canonical Wnt signaling pathway and acts as a stem cell marker of the intestinal epithelium and the hair follicle. Upon binding to R-spondins (RSPO1, RSPO2, RSPO3 or RSPO4), associates with phosphorylated LRP6 and frizzled receptors that are activated by extracellular Wnt receptors, triggering the canonical Wnt signaling pathway to increase expression of target genes. In contrast to classical G-protein coupled receptors, does not activate heterotrimeric G-proteins to transduce the signal. Involved in the development and/or maintenance of the adult intestinal stem cells during postembryonic development.

APPLICATION:	Western Blot 1:1000
	Immunofluorescent staining 1:100
	Immunohistochemistry 1:25
	Flow cytometry 1:25

Note: This information is only intended as a guide. The optimal dilutions must be determined by the user.



Western blot and Flow Cytometry analysis of LGR4 using anti-LGR5 antibody. (Left) Western blot analysis in mouse skeletal muscle lysate, rat skeletal muscle lysates, HeLa cell lysates, HepG2 cell lysates and SH-SY5Y cell lysates. LGR5 (arrow) was detected using the purified antibody. (Right) Overlay histogram showing SH-SY5Y cells stained with anti-LGR5 antibody (green). Isotype control antibody (blue) was rabbit IgG used under the same conditions. Acquisition of >10, 000 events was performed.

RELATED PRODUCTS:

- Wnt-1 Antibody (Cat. No. 3571-100)
- WNT-1, human recombinant (Cat. No. 4754-10, -50, -1000)
- Wnt-2 Antibody (Cat. No. 6671-100)
- Wnt-2, human recombinant (Cat. No. 7599 -10, -50, -1000)
- PKA Antibody (Cat. No. 3115-100)
- GSK-3b, human recombinant (Cat. No. 7004-10, -100, -1000)

FOR RESEARCH USE ONLY! Not to be used on humans.