

## AGR2 Antibody

**ALTERNATE NAMES:** Anterior gradient protein 2 homolog, AG-2, hAG-2, HPC8, Secreted cement gland protein XAG-2 homolog, AGR2, UNQ515/PRO1030

**CATALOG NO. :** A1008-100

**AMOUNT:** 100 µl

**HOST:** Rabbit

**IMMUNOGEN:** synthetic human MEF2C peptide (Leu 11 – Thr 43)

**PURIFICATION:** Affinity purified rabbit IgG

**MOLECULAR WEIGHT:** 20 kDa

**FORM:** Liquid

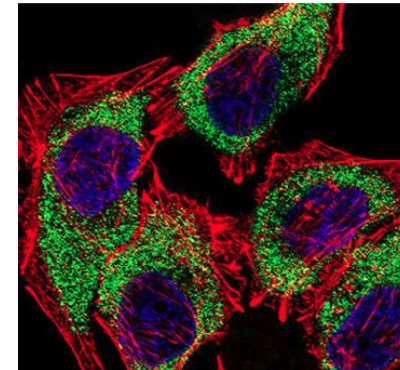
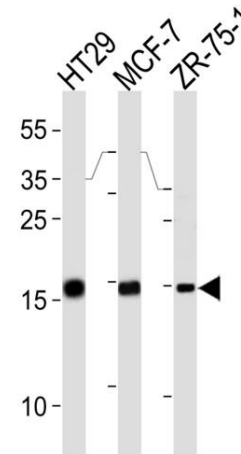
**FORMULATION:** Supplied in PBS with 0.09% (W/V) sodium azide.

**SPECIES REACTIVITY:** Human

**STORAGE CONDITIONS:** Store at -20°C. Avoid repeated freeze/thaw cycles.

**DESCRIPTION:** Required for MUC2 post-transcriptional synthesis and secretion. May play a role in the production of mucus by intestinal cells. Proto-oncogene that may play a role in cell migration, cell differentiation and cell growth. Expressed strongly in trachea, lung, stomach, colon, prostate and small intestine. Expressed weakly in pituitary gland, salivary gland, mammary gland, bladder, appendix, ovary, fetal lung, uterus, pancreas, kidney, fetal kidney, testis, placenta, thyroid gland and in estrogen receptor (ER)-positive breast cancer cell lines.

**APPLICATION:** Western Blot 1:1000  
Immunofluorescent staining 1:10~50  
Immunohistochemistry 1:10~50



**Western blot and immunofluorescent analysis of AGR2 using anti-AGR2 antibody.** (Left) Western blot analysis in HT29, MCF-7, ZR-751 cell lysates. AGR2 (arrow) was detected using the purified antibody. (Right) Fluorescent confocal image of A549 cell stained with AGR2 Antibody (green). Cytoplasmic actin and Nuclei were stained in red and blue. AGR2 immunoreactivity is localized to Cytoplasm.

### RELATED PRODUCTS:

- BRCA1 Antibody (Cat. No. 3364-100)
- P53 Antibody (Cat. No. 3036-100)
- YAP1 Antibody (Cat. No. 3815-100)
- Amphiregulin, Human Recombinant (Cat. No. 7114-10, -50)

**Note:** This information is only intended as a guide. The optimal dilutions must be determined by the user.

**FOR RESEARCH USE ONLY! Not to be used on humans.**