

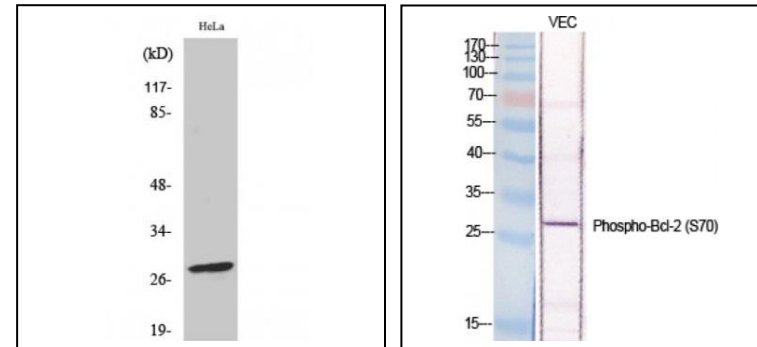
Phospho-Bcl-2 (Ser70) Antibody

ALTERNATE NAMES:	BCL2; Apoptosis regulator Bcl-2
CATALOG NO. :	A1011-100
AMOUNT:	100 ul
HOST:	Rabbit
Isotype:	IgG
CLONALITY:	Polyclonal
IMMUNOGEN:	Synthesized peptide derived from human Bcl-2 around the phosphorylation site of Ser70.
PURIFICATION:	Affinity purified
MOLECULAR WEIGHT:	26 kDa
FORM:	Liquid
FORMULATION:	100 ug (1mg/ml) of affinity purified rabbit phospho-Bcl-2 (Ser70) polyclonal antibody in PBS containing 50% glycerol, 0.5% BSA and 0.02% sodium azide
SPECIES REACTIVITY:	Human, Monkey
STORAGE CONDITIONS:	Store at -20°C. Avoid repeated freeze/thaw cycles.
DESCRIPTION:	Bcl2 is an integral outer mitochondrial membrane protein that regulates the apoptotic cell death in variety of cells such as lymphocytes and neural cells. It regulates mitochondrial calcium homeostasis and proton flux. Several reports suggested that these phosphorylation sites may be targets of the ASK1/MKK7/JNK1 pathway and that phosphorylation of Bcl-2 may be a marker for mitotic events. Interleukin-3 and JNK-induced Bcl-2 phosphorylation at Ser70 regulates anti-apoptotic activity.
SPECIFICITY:	Phospho-Bcl-2 (Ser70) Polyclonal Antibody detects endogenous levels of Bcl-2 protein only when phosphorylated at Ser70.

APPLICATIONS:

Western Blot 1:500-1:2000
Immunoprecipitation 1:200-500
Immunohistochemistry 1:100-1:300
ELISA 1:10000

Note: This information is only intended as a guide. The optimal dilutions must be determined by the user.



Detection of Bcl-2 by Western Blot. (Left) Western blot analysis in HeLa cell line lysates. (Right) Western blot analysis in Vascular Endothelial cell line lysates. Bcl-2 was detected using the Phospho-Bcl-2 (Ser70) Polyclonal purified antibody.

RELATED PRODUCTS:

- Bcl-2 Antibody (Cat. No. 3033-100)
- Bcl-2 Antibody (Clone Bcl-2/100) (Cat. No. 3195-100)
- BCL-2 Inhibitor, ABT-199 (Cat. No. 2253-1)
- Active BCL2L1 Protein, human recombinant (Cat. No. 7885-10)
- ABT-263 (Cat. No. 2467-5)
- ABT-737 (Cat. No. 2463-5)
- AT-101 (Cat. No. 2380-5)
- Bnip3L/Nix Antibody (Cat. No. 2380-5)

FOR RESEARCH USE ONLY! Not to be used on humans.