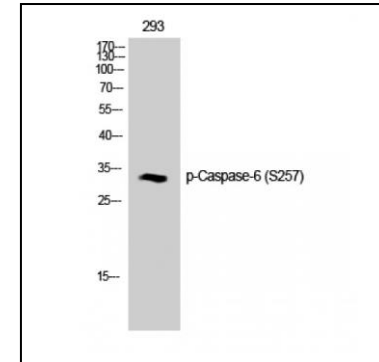


Phospho-Caspase-6 (Ser257) antibody

ALTERNATE NAMES:	CASP6; MCH2; Caspase-6; CASP-6; Apoptotic protease Mch-2
CATALOG NO. :	A1013-100
AMOUNT:	100 ul
HOST:	Rabbit
Isotype:	IgG
CLONALITY:	Polyclonal
IMMUNOGEN:	Synthesized peptide derived from human Caspase-6 around the phosphorylation site of Ser257.
PURIFICATION:	Affinity purified
MOLECULAR WEIGHT:	15/30 kDa
FORM:	Liquid
FORMULATION:	100 ug (1mg/ml) of affinity purified rabbit phospho- Caspase-6 (Ser257) polyclonal antibody in PBS containing 50% glycerol, 0.5% BSA and 0.02% sodium azide
SPECIES REACTIVITY:	Human, Mouse, Rat
STORAGE CONDITIONS:	Store at -20°C. Avoid repeated freeze/thaw cycles.
DESCRIPTION:	Caspases are the central components of the apoptotic response. Caspase 6 is a member of the cysteine-aspartic acid protease (caspase) family. Caspases are divided into two classes: the initiator caspases, which include caspase 2, 8, 9 and 10 and the effector caspases, which include caspases 3, 6 and 7. Effector caspases being activated by initiator caspases leads the proteolytic cleavage of a broad spectrum of cellular targets, which ultimately leads to cell death.
SPECIFICITY:	Phospho-Caspase-6 (Ser257) Polyclonal Antibody detects endogenous levels of Caspase-6 protein only when phosphorylated at Ser257.

APPLICATIONS: Western Blot 1:500-1:2000
Immunohistochemistry 1:100-1:300
Immunofluorescence 1:200-1:1000
ELISA 1:20000

Note: This information is only intended as a guide. The optimal dilutions must be determined by the user.



Detection of Caspase-6 (Ser257) by Western Blot. Western Blot analysis of 293 cells using Phospho-Caspase-6 (Ser257) Polyclonal Antibody

RELATED PRODUCTS:

- Caspase-6 Antibody (Cat. No. 3256-100)
- Caspase-6 Colorimetric Assay Kit (Cat. No. K115-100)
- Caspase-6 Fluorometric Assay Kit (Cat. No. K114-100)
- Caspase-6 Inhibitor Z-VEID-FMK (Cat. No. 1011-100)
- Caspase-6, human recombinant (Cat. No. 1086-100)

FOR RESEARCH USE ONLY! Not to be used on humans.