

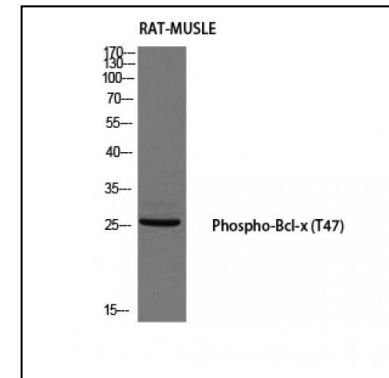
Phospho-Bcl-x (Thr47) antibody

ALTERNATE NAMES:	BCL2L1; BCL2L; BCLX; Bcl-2-like protein 1; Bcl2-L-1; Apoptosis regulator Bcl-X
CATALOG NO. :	A1014-100
AMOUNT:	100 ul
HOST:	Rabbit
Isotype:	IgG
CLONALITY:	Polyclonal
IMMUNOGEN:	Synthesized peptide derived from human Bcl-x around the phosphorylation site of Thr47.
PURIFICATION:	Affinity purified
MOLECULAR WEIGHT:	30 kDa
FORM:	Liquid
FORMULATION:	100 ug (1mg/ml) of affinity purified rabbit phospho- Bcl-x (Thr47) polyclonal antibody in PBS containing 50% glycerol, 0.5% BSA and 0.02% sodium azide
SPECIES REACTIVITY:	Human, Mouse, Rat
STORAGE CONDITIONS:	Store at -20°C. Avoid repeated freeze/thaw cycles.
DESCRIPTION:	Bcl-x is a dominant regulator of programmed cell death in mammalian cells. Members of the wider Bcl-2 family, which also includes Bcl-x, Bcl-w and Mcl-1, are described by their similarity to Bcl-2 protein. Bcl-x an antiapoptotic member of the Bcl-2 family is a dominant regulator of programmed cell death in mammalian cells. Bcl-x is located at the outer mitochondrial membrane and regulates outer mitochondrial membrane channel (VDAC) opening. The long form (Bcl-x (L)) displays cell death repressor activity, but the short isoform (Bcl-x(S)) and the b-isoform (Bcl-xb) promote cell death.
SPECIFICITY:	Phospho-Bcl-x (Thr47) Polyclonal Antibody detects endogenous levels of Bcl-x protein only when phosphorylated at Thr47.

APPLICATIONS:

Western Blot 1:500-1:2000
Immunohistochemistry 1:100-1:300
Immunofluorescence 1:200-1:1000
ELISA 1:40000

Note: This information is only intended as a guide. The optimal dilutions must be determined by the user.



Detection of Phospho Bcl-x by Western Blot Western blot analysis of RAT-MUSLE cells lysate using Phospho-Bcl-x (Thr47) antibody.

RELATED PRODUCTS:

- Bcl-x Antibody (Cat. No. 3041-100)
- Bcl-xL Blocking Peptide (Cat. No. 3312BP-50)
- ABT-263 (Cat. No. 2467-5)
- ABT-737 (Cat. No. 2463-5)
- Active BCL2L1 Protein, human recombinant (Cat. No. 7885-10)
- Phospho-Bad Antibody (Cat. No. 3269-100)
- Noxa Antibody (Cat. No. 3665-100)

FOR RESEARCH USE ONLY! Not to be used on humans.