

L-Methionine γ -Lase Polyclonal Antibody

ALTERNATE NAMES:	Methionine gamma-lyase, L-methioninase, mdeA
CATALOG NO. :	A1015-100
INTERNAL ID:	BV-Q35
AMOUNT:	100 μ g (0.5 mg/ml)
HOST:	Rabbit
IMMUNOGEN:	L-Methionine γ -Lase (Cat. No. 7848), <i>Pseudomonas putida</i> recombinant
PURIFICATION:	Affinity purified rabbit IgG
MOLECULAR WEIGHT:	47 kDa
FORM:	Liquid
FORMULATION:	Supplied in PBS (pH 7.2) with 0.01 % BSA, 0.03 % ProClin®, and 50 % glycerol
SPECIES REACTIVITY:	Human, Mouse
STORAGE CONDITIONS:	Store at -20°C. Avoid repeated freeze/thaw cycles.
DESCRIPTION:	Methionine gamma-lyase from <i>Pseudomonas putida</i> is a PLP-dependent enzyme which plays a central role in sulfur amino acid metabolism. METase catalyzes the α , γ -elimination of methionine to α -ketobutyrate, methanethiol, and ammonia. METase also catalyzes the α , γ -elimination of other sulfur containing amino acids, such as homocysteine, cysteine. Because of its ability to deplete methionine, METase has been considered as a viable component of cancer therapeutics against methionine-dependent tumor cells. METase has also been utilized to design drug targets for the infectious diseases caused by parasitic protozoa and anaerobic periodontal bacteria.
APPLICATION:	Western blot: 1-4 μ g/ml

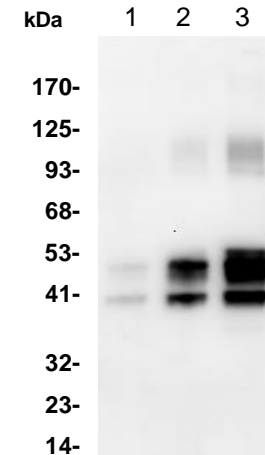


Figure Legend: Western blot analysis of h L-Methionine γ -Lase antibody with 2 ng (1), 10 ng (2), 100 ng (3) L-Methionine γ -Lase recombinant protein.

RELATED PRODUCTS:

- L-Methionine γ -Lyase, *Pseudomonas putida* recombinant (**Cat. No.7848-100, -500**)
- Cystathionine β Synthase, human recombinant (**Cat No. 7844-100, 500**)
- Human Recombinant Glyoxalase I (**Cat No. 6389-100**)
- Glycine Oxidase, bacterial Recombinant (**Cat No. 7845-250 -1000**)

Note: This information is only intended as a guide.
The optimal dilutions must be determined by the user.

FOR RESEARCH USE ONLY! Not to be used on humans