

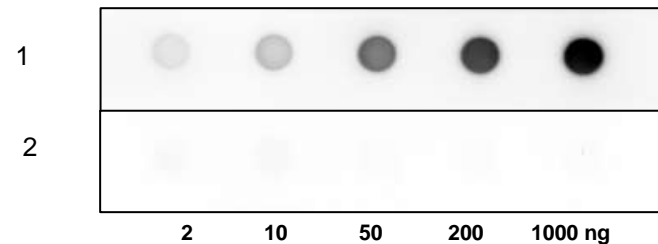
HDL Polyclonal Antibody

CATALOG NO. :	A1052-30T 30 µg (Trial size) A1052-100 100 µg
ALTERNATE NAMES:	High Density Lipoprotein
HOST:	Rabbit
IMMUNOGEN:	Lipoproteins, High Density, Human Plasma (HDL) (Cat. No. 4934-1000)
INTERNAL ID:	BV-P17
PURIFICATION:	Affinity purified rabbit IgG
FORM:	Liquid
FORMULATION:	0.5 mg/ml antibody supplied in PBS (pH 7.2) with 0.01 % BSA, 0.03 % ProClin® and 50 % glycerol
SPECIES REACTIVITY:	Human
STORAGE CONDITIONS:	Store at -20°C. Avoid repeated freeze/thaw cycles.
DESCRIPTION	HDL is the vehicle for reversed cholesterol transport and esterification, serving as a scavenger for free cholesterol during intra vascular catabolism of lipoproteins. HDL levels are inversely correlated with coronary heart disease. In a normal fasting individual, HDL concentrations range from 1.0-2.0 g/L.
APPLICATION:	Western blot: 1-4 µg/ml Dot blot: 1-4 µg/ml

Note: This information is only intended as a guide. The optimal dilutions must be determined by the user.

rev.06/17

For research use only



Dot blot analysis of HDL using anti- HDL antibody:

Lane 1: HDL Lane 2: BSA

RELATED PRODUCTS:

- Lipoprotein a [Lp(a)], Human Plasma (**Cat. No. 4930-50**)
- Lipoprotein, Human Plasma, Low Density (**Cat. No. 4931-1000**)
- Lipoprotein, Human Plasma, Intermediate Density (**Cat. No. 4932-1000**)
- Lipoprotein, Human Plasma, very low Density (**Cat. No. 4933-1000**)
- HDL and LDI/VLDL Assay Kit (**Cat. No. K613-100**)
- Lipoproteins, High Density, Human Plasma (HDL) (**Cat. No. 4934-1000**)

FOR RESEARCH USE ONLY! Not to be used on humans.