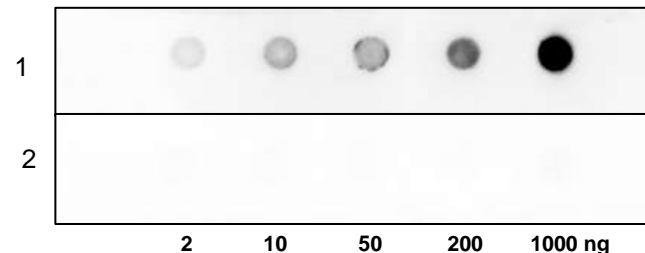


Secretin Polyclonal Antibody

CATALOG NO. :	A1054-30T 30 µg (Trial size) A1054-100 100 µg
HOST:	Rabbit
IMMUNOGEN:	Synthetic peptide corresponding to Secretin (Cat. No. 4007-1000)
INTERNAL ID:	BV-P74
PURIFICATION:	Affinity purified rabbit IgG
FORM:	Liquid
FORMULATION:	0.5 mg/ml antibody supplied in PBS (pH 7.2) with 0.01 % BSA, 0.03 % ProClin® and 50 % glycerol
STORAGE CONDITIONS:	Store at -20°C. Avoid repeated freeze/thaw cycles.
DESCRIPTION	Human Secretin stimulates the secretion of bicarbonate by the pancreas and inhibits the production of gastrin and acid production in the stomach. It also potentiates the release of digestive enzymes from the pancreas triggered by cholecystokinin
APPLICATION:	Western blot: 1-4 µg/ml Dot blot: 1-4 µg/ml



Dot blot analysis of Secretin using anti-Secretin antibody: Lane 1: Secretin Lane 2: BSA

RELATED PRODUCTS:

- Secretin (human) (Cat. No. 4007-1000)

Note: This information is only intended as a guide. The optimal dilutions must be determined by the user.

FOR RESEARCH USE ONLY! Not to be used on humans.