

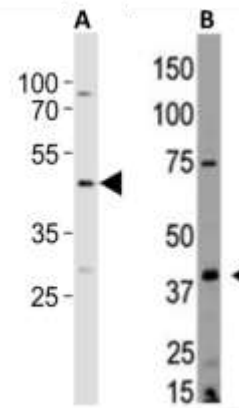
EDG4 Antibody (NT)

- ALTERNATE NAMES:** Lysophosphatidic acid receptor 2, LPA receptor 2, LPA-2, Lysophosphatidic acid receptor Edg-4, LPAR2, EDG4, LPA2
- CATALOG NO. :** A1056-100
- AMOUNT:** 100 µl
- IMMUNOGEN:** KLH conjugated synthetic peptide between 3-32 amino acids from the N-terminal region of human EDG4
- MOLECULAR WEIGHT:** ~39 kDa
- HOST/ISOTYE:** Rabbit
- CLONALITY:** Polyclonal
- FORM:** Liquid
- FORMULATION:** In PBS with 0.09% (W/V) sodium azide.
- PURIFICATION:** This antibody is prepared by Saturated Ammonium Sulfate (SAS) precipitation followed by dialysis against PBS
- SPECIES REACTIVITY:** Human, Monkey
- STORAGE CONDITIONS:** Maintain refrigerated at 2-8°C for up to 6 months. For long term storage, store at -20°C in small aliquots to prevent freeze-thaw cycles.

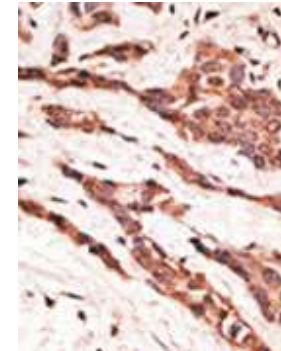
DESCRIPTION: EDG4 is a member of family I of the G protein-coupled receptors, as well as the EDG family of proteins. This protein functions as a lysophosphatidic acid (LPA) receptor and contributes to Ca²⁺ mobilization, a critical cellular response to LPA in cells, through association with Gi and Gq proteins. It plays a key role in phospholipase C-beta (PLC-beta) signaling pathway and stimulates phospholipase C (PLC) activity in a manner that is independent of RALA activation.

APPLICATION: WB: 1:1000, IHC: 1:50~100

Note: This information is only intended as a guide. The optimal dilutions must be determined by the user.



Western blot analysis using EDG4 (NT) antibody of cell lysates from:
(A) MDA-MB-231
(B) HL60



Formalin-fixed and paraffin-embedded human cancer tissue reacted with EDG4 antibody (NT), which was peroxidase-conjugated to the secondary antibody, followed by AEC staining.

RELATED PRODUCTS:

- LGR5 Antibody (Cat. No. A1007-100)
- Beta3-AR Antibody (Cat. No. 3939-200)
- CXCR4 Antibody (Cat. No. 5224-100)
- Adenosine Antibody (Cat. No. 6652--100)

FOR RESEARCH USE ONLY! Not to be used on humans.