

BAR2 Antibody (S261)

ALTERNATE NAMES: Beta-2 adrenergic receptor, Beta-2 adrenoreceptor, Beta-2 adrenoceptor, ADRB2, ADRB2R, B2AR

CATALOG NO. : A1057-100

AMOUNT: 100 µl

IMMUNOGEN: KLH conjugated synthetic peptide between 236-264 amino acids from human BAR2

MOLECULAR WEIGHT: ~46 kDa

HOST/ISOTYE: Rabbit IgG

CLONALITY: Polyclonal

FORM: Liquid

FORMULATION: In PBS with 0.09% (W/V) sodium azide.

PURIFICATION: This antibody is purified through a protein A column, followed by peptide affinity purification.

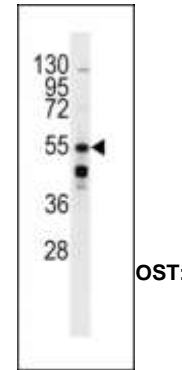
SPECIES REACTIVITY: Human, Mouse

STORAGE CONDITIONS: Maintain refrigerated at 2-8°C for up to 6 months. For long term storage, store at -20°C in small aliquots to prevent freeze-thaw cycles.

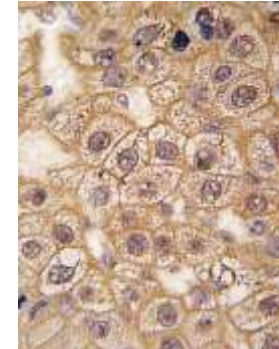
DESCRIPTION: Beta-2-adrenergic receptor is a member of the G protein-coupled receptor superfamily. This receptor is directly associated with one of its ultimate effectors, the class C L-type calcium channel Ca(V)1.2. This receptor-channel complex also contains a G protein, an adenylyl cyclase, cAMP-dependent kinase, and the counterbalancing phosphatase, PP2A. The assembly of the signaling complex provides a mechanism that ensures specific and rapid signaling by this G protein-coupled receptor. Beta-adrenergic receptors mediate the catecholamine- induced activation of adenylate cyclase through the action of G proteins. The beta-2-adrenergic receptor binds epinephrine with an approximately 30-fold greater affinity than it does norepinephrine.

APPLICATION: WB: 1:1000, IHC: 1:10~50

Note: This information is only intended as a guide. The optimal dilutions must be determined by the user.



OST:



Western blot analysis in mouse kidney lysates using BAR2 (S261) purified Pab.

Formalin-fixed and paraffin-embedded human hepatocarcinoma tissue reacted with BAR2 Antibody (S261), which was peroxidase-conjugated to the secondary antibody, followed by DAB staining

RELATED PRODUCTS:

- LGR5 Antibody (Cat. No. A1007-100)
- Beta3-AR Antibody (Cat. No. 3939-200)
- CXCR4 Antibody (Cat. No. 5224-100)
- Adenosine Antibody (Cat. No. 6652--100)
- EDG4 Antibody (N-term) (Cat. No. A1056-100)
-

FOR RESEARCH USE ONLY! Not to be used on humans.