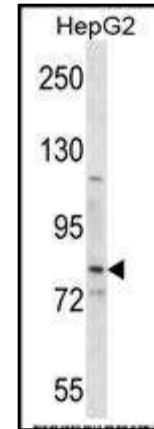


SMO Antibody (Center)

- ALTERNATE NAMES:** Smoothed homolog, SMO, Protein Gx, SMO, SMOH
- CATALOG NO. :** A1058-100
- AMOUNT:** 100 µl
- IMMUNOGEN:** KLH conjugated synthetic peptide between 539-567 amino acids from the Central region of human SMO.
- MOLECULAR WEIGHT:** ~86 kDa
- HOST/ISOTYE:** Rabbit IgG
- CLONALITY:** Polyclonal
- FORM:** Liquid
- FORMULATION:** In PBS with 0.09% (W/V) sodium azide.
- PURIFICATION:** This antibody is purified through a protein A column, followed by peptide affinity purification.
- SPECIES REACTIVITY:** Human
- STORAGE CONDITIONS:** Maintain refrigerated at 2-8°C for up to 6 months. For long term storage, store at -20°C in small aliquots to prevent freeze-thaw cycles.
- DESCRIPTION:** The protein encoded by this gene is a G protein-coupled receptor that interacts with the patched protein, a receptor for hedgehog proteins. The encoded protein transduces signals to other proteins after activation by a hedgehog protein/patched protein complex.
- APPLICATION:** WB: 1:1000

Note: This information is only intended as a guide. The optimal dilutions must be determined by the user.



Western blot analysis in HepG2 cell line lysates using SMO purified antibody.

ST: Rabbit

RELATED PRODUCTS:

- LGR5 Antibody (Cat. No. A1007-100)
- Beta3-AR Antibody (Cat. No. 3939-200)
- CXCR4 Antibody (Cat. No. 5224-100)
- Adenosine Antibody (Cat. No. 6652--100)
- EDG4 Antibody (N-term) (Cat. No. A1056-100)
- BAR2 Antibody (S261) (Cat. No. A1057-100)

FOR RESEARCH USE ONLY! Not to be used on humans.