

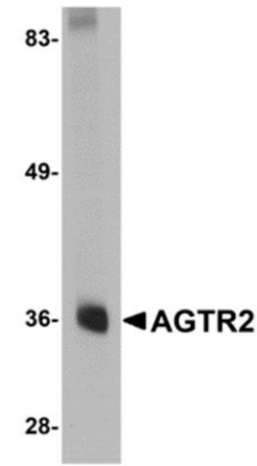
## AGTR2 Polyclonal Antibody

<b>CATALOG NO:</b>	A1063-50
<b>ALTERNATE NAMES:</b>	AT2, ATGR2, MRX88, Type-2 angiotensin II receptor, Angiotensin II type-2 receptor, AT2
<b>AMOUNT:</b>	50 µl (1 mg/ml)
<b>CLONALITY:</b>	Polyclonal
<b>IMMUNOGEN:</b>	AGTR2 antibody was raised against a 16 amino acid synthetic peptide from near the center of human AGTR2.
<b>HOST/ISOTYPE:</b>	Rabbit IgG
<b>SPECIES REACTIVITY:</b>	Human, Mouse, Rat
<b>PURIFICATION:</b>	Affinity chromatography purified via peptide column.
<b>MOLECULAR WEIGHT:</b>	Predicted: 40 kDa Observed: 36 kDa
<b>FORM:</b>	Liquid
<b>FORMULATION:</b>	In Phosphate-Buffered Saline (pH 7.4) containing 0.02% sodium azide.
<b>STORAGE CONDITIONS:</b>	Store at 4°C. For long term storage, aliquot and freeze at -20°C. Avoid repeated freeze/thaw cycles.

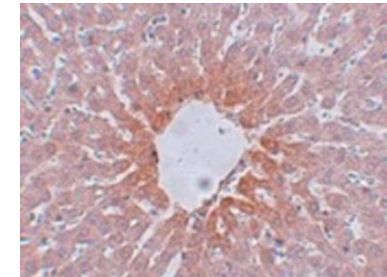
**DESCRIPTION:** AGTR2 Antibody: Angiotensin II is a potent vasopressor hormone and a primary regulator of aldosterone secretion that acts through at least two types of receptors, AGTR1 and AGTR2. It is an important effector controlling blood pressure and volume in the cardiovascular system and plays a major role in the development of the mammalian kidney and urinary tract. Like AGTR1, AGTR2 is a seven transmembrane G protein-coupled receptor (GPCR), but AGTR2 does not demonstrate most of the classic features of GPCR signaling. AGTR2 is involved in a wide range of activities, including the induction of neurite outgrowth and the inhibition of cellular proliferation, in addition to the known function of mediation of vasoconstriction.

**APPLICATION:** WB-0.5 µg/mL, IHC-P-5 µg/mL, ELISA,

**Note:** This information is only intended as a guide. The optimal dilutions must be determined by the user.



Western blot analysis of AGTR2 in mouse liver tissue lysate with AGTR2 antibody



Immunohistochemistry of AGTR2 in rat liver tissue with AGTR2 antibody

**RELATED PRODUCTS:**

- LGR5 Antibody (Cat. No. A1007-100)
- Beta3-AR Antibody (Cat. No. 3939-200)
- CXCR4 Antibody (Cat. No. 5224-100)
- Adenosine Antibody (Cat. No. 6652--100)
- EDG4 Antibody (N-term) (Cat. No. A1056-100)
- BAR2 Antibody (S261) (Cat. No. A1057-100)
- SMO Antibody (Center) (Cat. No. A1058-100)
- 5-Hydroxytryptamine Receptor 1A Antibody (Cat. No. A1059-100)

**FOR RESEARCH USE ONLY! Not to be used on humans.**