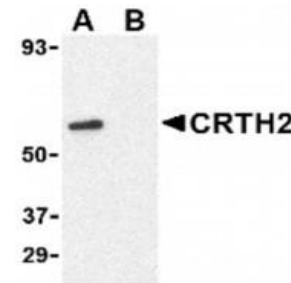


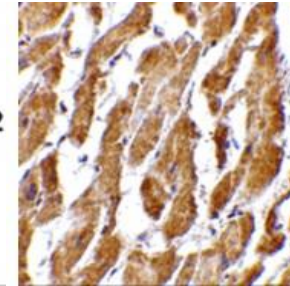
CRTH2 Polyclonal Antibody

CATALOG NO:	A1064-50
ALTERNATE NAMES:	CRTH2 Antibody: DP2, DL1R, CD294, CRTH2, GPR44, Prostaglandin D2 receptor 2, Chemoattractant receptor homologous molecule expressed on Th2 cells
AMOUNT:	50 µg
CLONALITY:	Polyclonal
IMMUNOGEN:	CRTH2 antibody was raised against 18 amino acid synthetic peptide from near the amino terminus of human CRTH2.
HOST/ISOTYPE:	Rabbit IgG
SPECIES REACTIVITY:	Human, Mouse, Rat
PURIFICATION:	Affinity chromatography purified via peptide column.
MOL WEIGHT:	Predicted: 43.55 kDa Observed: 60 kDa
FORM:	Liquid
FORMULATION:	In Phosphate-Buffered Saline (pH 7.4) containing 0.02% sodium azide.
STORAGE CONDITIONS:	Store at 4°C. For long term storage, aliquot and freeze at -20°C. Avoid repeated freeze/thaw cycles.
DESCRIPTION:	The chemoattractant receptor-homologous molecule expressed on Th2 cells (CRTH2) is a recently identified receptor for the prostaglandin D2 (PGD2) in addition to the classic prostaglandin D receptor. CRTH2 is expressed on Th2 cells and eosinophils and mediates chemotaxis of these cells to PGD2 and is thus thought to be a key receptor mediating eosinophil and Th2 recruitment during allergic responses. However, CRTH2-null mice showed enhanced eosinophil recruitment into the lung consistent with observations that the CRTH2-null mice produced significantly higher amounts of interleukin-5 (IL-5) and IL-3. This suggests that CRTH2 plays a nonredundant role in restricting eosinophilia and allergic response in vivo.
APPLICATION:	WB-1 µg/ml, IHC-P-2.5 µg/ml, IF- 20 µg/ml

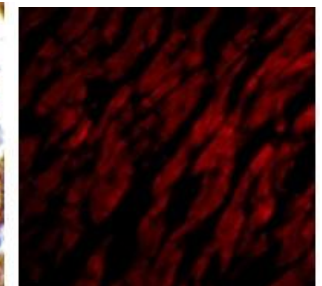
Note: This information is only intended as a guide. The optimal dilutions must be determined by the user.



Western blot analysis of CRTH2 in Jurkat cell lysate with CRTH2



Immunohistochemistry of CRTH2 in human heart tissue with CRTH2 antibody



Immunofluorescence of CRTH2 in human heart tissue with CRTH2 antibody

RELATED PRODUCTS:

- LGR5 Antibody (Cat. No. A1007-100)
- Beta3-AR Antibody (Cat. No. 3939-200)
- CXCR4 Antibody (Cat. No. 5224-100)
- Adenosine Antibody (Cat. No. 6652--100)
- EDG4 Antibody (N-term) (Cat. No. A1056-100)
- BAR2 Antibody (S261) (Cat. No. A1057-100)
- SMO Antibody (Center) (Cat. No. A1058-100)
- 5-Hydroxytryptamine Receptor 1A Antibody (Cat. No. A1059-100)
- AGTR2 Polyclonal Antibody (Cat. No. A1063-50)

FOR RESEARCH USE ONLY! Not to be used on humans.