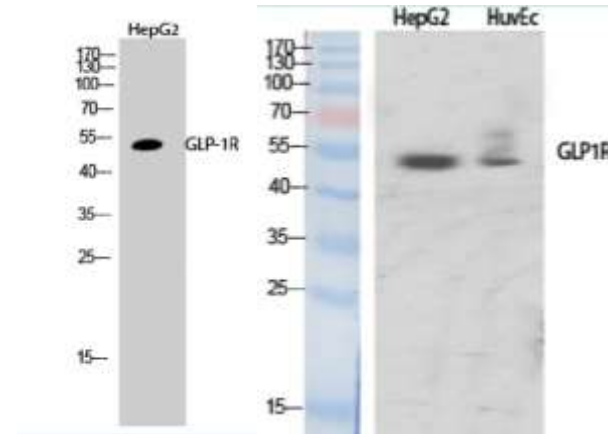


GLP-1R Polyclonal Antibody

CATALOG NO:	A1065-100 100 µg
ALTERNATE NAMES:	GLP1R; Glucagon-like peptide 1 receptor; GLP-1 receptor; GLP-1-R; GLP-1R
AMOUNT:	100 µl (1 mg/ml)
IMMUNOGEN:	Synthesized peptide derived from the Internal region of human GLP-1R (80-160aa).
HOST/ISOTYPE:	Rabbit IgG
SPECIES REACTIVITY:	Human, Mouse
PURIFICATION:	Affinity-chromatography using epitope specific immunogen.
MOL. WEIGHT	53 kDa
SPECIFICITY:	GLP-1R Polyclonal Antibody detects endogenous levels of GLP-1R protein.
FORM:	Liquid
FORMULATION:	Liquid in PBS containing 50% glycerol, 0.5% BSA and 0.02% sodium azide.
STORAGE CONDITIONS:	Store at 4°C. For long term storage, aliquot and freeze at -20°C. Avoid repeated freeze/thaw cycles.
DESCRIPTION:	This is a receptor for glucagon-like peptide 1. The activity of this receptor is mediated by G proteins which activate adenylyl cyclase. Currently, six glucagon-like peptide-1 receptor agonists (GLP-1RAs) are approved for treating type 2 diabetes.
APPLICATION:	WB 1:500-1:2000 IF 1:200-1:1000 ELISA 1:5000
	Note: This information is only intended as a guide. The optimal dilutions must be determined by the user.



Western Blot analysis of GLP-1R using GLP-1R antibody in HepG2 and HuvEc cell lysates.

RELATED PRODUCTS:

- LGR5 Antibody (Cat. No. A1007-100)
- Beta3-AR Antibody (Cat. No. 3939-200)
- CXCR4 Antibody (Cat. No. 5224-100)
- Adenosine Antibody (Cat. No. 6652-100)
- EDG4 Antibody (N-term) (Cat. No. A1056-100)
- BAR2 Antibody (S261) (Cat. No. A1057-100)
- SMO Antibody (Center) (Cat. No. A1058-100)
- 5-Hydroxytryptamine Receptor 1A Antibody (Cat. No. A1059-100)
- AGTR2 Polyclonal Antibody (Cat. No. A1063-50)
- CRTH2 Polyclonal Antibody (Cat. No. A1064-50)

FOR RESEARCH USE ONLY! Not to be used on humans.