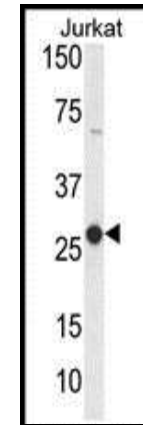


CD160 Polyclonal Antibody

CATALOG NO:	A1072-100
ALTERNATIVE NAMES:	CD160 antigen, Natural killer cell receptor BY55, CD160, CD160, BY55
AMOUNT:	100 µl
IMMUNOGEN:	KLH conjugated synthetic peptide between 56-82 amino acids from the Central region of human CD160.
MOLECULAR WEIGHT:	19.8 k Da
HOST/ISOTYPE:	Rabbit IgG
SPECIES REACTIVITY:	Human, Mouse
PURIFICATION:	This antibody is purified through a protein A column, followed by peptide affinity purification.
FORM:	Liquid
FORMULATION:	Supplied in PBS with 0.09% (W/V) sodium azide.
STORAGE CONDITIONS:	Maintain refrigerated at 2-8°C for up to 6 months. For long term storage store at -20°C in small aliquots to prevent freeze-thaw cycles.
DESCRIPTION:	CD160 is a 27 kDa glycoprotein which was initially identified with the monoclonal antibody BY55. Its expression is tightly associated with peripheral blood NK cells and CD8 T lymphocytes with cytolytic effector activity. The cDNA sequence of CD160 predicts a cysteine-rich, glycosylphosphatidylinositol-anchored protein of 181 amino acids with a single Ig-like domain weakly homologous to KIR2DL4 molecule. CD160 is expressed at the cell surface as a tightly disulfide-linked multimer. RNA blot analysis revealed CD160 mRNAs of 1.5 and 1.6 kb whose expression was highly restricted to circulating NK and T cells, spleen and small intestine. Within NK cells CD160 is expressed by CD56dimCD16+ cells whereas among circulating T cells its expression is mainly restricted to TCRgd bearing cells and to TCRab+CD8brightCD95+CD56+CD28-CD27-cells. In tissues, CD160 is expressed on all intestinal intraepithelial lymphocytes. CD160 shows a broad specificity for binding to both classical and nonclassical MHC class I molecules.
APPLICATION:	WB: 1:1000

Note: This information is only intended as a guide. The optimal dilutions must be determined by the user.



Western blot analysis of CD160 Antibody in Jurkat cell line lysate.

RELATED PRODUCTS

- Human CellExp™ CD160/BY55, human recombinant (**Cat. No. 7386-10, -50**)
- CD223 (LAG3) Polyclonal Antibody (**Cat. No. A1067-100**)
- CD86 Polyclonal Antibody (**Cat. No. A1068-100**)
- Tim-3 Antibody (**Cat. No. 3808-100**)
- PD-1/PDCD1 Antibody (**Cat. No. 6931-50**)
- Human CellExp™ CD155, human recombinant (**Cat. No. 7462-10, -50**)

FOR RESEARCH USE ONLY! Not to be used on humans.