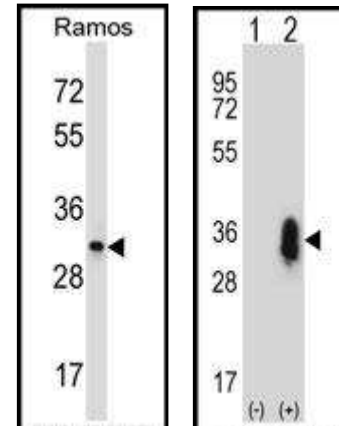


## CD27 Polyclonal Antibody

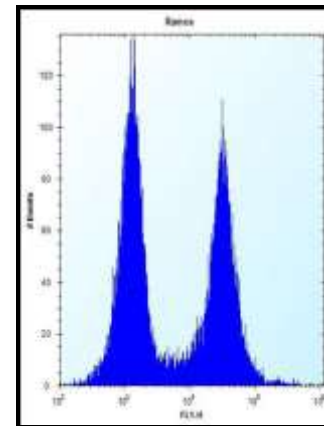
<b>CATALOG NO:</b>	A1074-100
<b>ALTERNATIVE NAMES:</b>	CD27 antigen, CD27L receptor, T-cell activation antigen CD27, T14, Tumor necrosis factor receptor superfamily member 7, CD27, CD27, TNFRSF7
<b>AMOUNT:</b>	100 µl
<b>IMMUNOGEN:</b>	KLH conjugated synthetic peptide between 196-225 amino acids from the C-terminal region of human CD27.
<b>MOLECULAR WEIGHT:</b>	29 kDa
<b>HOST/ISOTYPE:</b>	Rabbit IgG
<b>SPECIES REACTIVITY:</b>	Human
<b>PURIFICATION:</b>	This antibody is purified through a protein A column, followed by peptide affinity purification.
<b>FORM:</b>	Liquid
<b>FORMULATION:</b>	Supplied in PBS with 0.09% (W/V) sodium azide.
<b>STORAGE CONDITIONS:</b>	Maintain refrigerated at 2-8°C for up to 6 months. For long term storage store at -20°C in small aliquots to prevent freeze-thaw cycles.
<b>DESCRIPTION:</b>	The protein encoded by this gene is a member of the TNF-receptor superfamily. This receptor is required for generation and long-term maintenance of T cell immunity. It binds to ligand CD70, and plays a key role in regulating B-cell activation and immunoglobulin synthesis. This receptor transduces signals that lead to the activation of NF-kappaB and MAPK8/JNK. Adaptor proteins TRAF2 and TRAF5 have been shown to mediate the signaling process of this receptor. CD27-binding protein (SIVA), a proapoptotic protein, can bind to this receptor and is thought to play an important role in the apoptosis induced by this receptor.
<b>APPLICATION:</b>	FC: 1:10 – 1:50 WB: 1:1000

**Note: This information is only intended as a guide. The optimal dilutions must be determined by the user.**



**Western blot analysis of CD27**  
**Antibody in:**

Fig 1: Ramos cell line lysates  
Fig 2: 293 cell lysate non-transfected (left), transfected (right).



**Flow cytometric analysis of Ramos cells**  
**(right histogram) compared to a negative control cell (left histogram).**

### RELATED PRODUCTS

- CD223 (LAG3) Polyclonal Antibody (Cat. No. A1067-100)
- CD86 Polyclonal Antibody (Cat. No. A1068-100)
- Tim-3 Antibody (Cat. No. 3808-100)
- PD-1/PDCD1 Antibody (Cat. No. 6931-50)
- CD160 Polyclonal Antibody (Cat. No. A1072-100)
- Human CellExp™ CD27 / TNFRSF7, Human recombinant (Cat. No. 9243-25, -100)

**FOR RESEARCH USE ONLY! Not to be used on humans.**