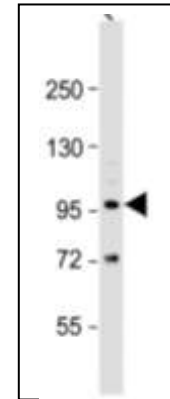


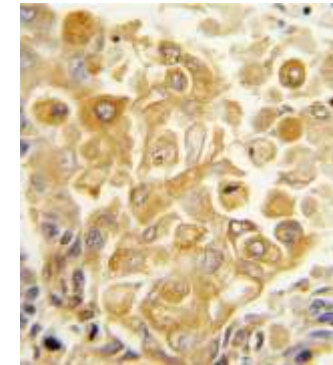
## TLR2 Polyclonal Antibody

<b>CATALOG NO:</b>	A1075-100
<b>ALTERNATIVE NAMES:</b>	Toll-like receptor 2, Toll/interleukin-1 receptor-like protein 4, CD282, TLR2, TIL4
<b>AMOUNT:</b>	100 µl
<b>IMMUNOGEN:</b>	KLH conjugated synthetic peptide between 212-242 amino acids from the N-terminal region of human TLR2.
<b>MOLECULAR WEIGHT:</b>	89 kDa
<b>HOST/ISOTYPE:</b>	Rabbit IgG
<b>SPECIES REACTIVITY:</b>	Human
<b>PURIFICATION:</b>	This antibody is purified by Saturated Ammonium Sulfate (SAS) precipitation followed by dialysis against PBS.
<b>FORM:</b>	Liquid
<b>FORMULATION:</b>	Supplied in PBS with 0.09% (W/V) sodium azide.
<b>STORAGE CONDITIONS:</b>	Maintain refrigerated at 2-8°C for up to 6 months. For long term storage store at -20°C in small aliquots to prevent freeze-thaw cycles.
<b>DESCRIPTION:</b>	The protein encoded by this gene is a member of the Toll-like receptor (TLR) family which plays a fundamental role in pathogen recognition and activation of innate immunity. TLRs are highly conserved from Drosophila to humans and share structural and functional similarities. They recognize pathogen-associated molecular patterns (PAMPs) that are expressed on infectious agents, and mediate the production of cytokines necessary for the development of effective immunity. The various TLRs exhibit different patterns of expression. This gene is expressed most abundantly in peripheral blood leukocytes, and mediates host response to Gram-positive bacteria and yeast via stimulation of NF-kappaB.
<b>APPLICATION:</b>	FC: 1:10 – 1:50 WB: 1:1000 IHC-P: 1:10-1:50

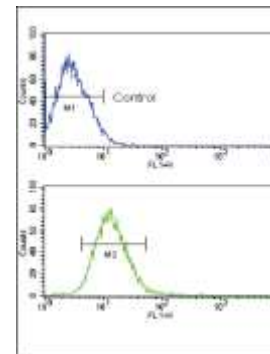
**Note:** This information is only intended as a guide. The optimal dilutions must be determined by the user.



Western blot analysis of TLR2 Antibody in Ramos cell line lysates



Formalin-fixed and paraffin-embedded human lung carcinoma tissue reacted with TLR2 antibody (N-term), which was peroxidase-conjugated to the secondary antibody, followed by DAB staining.



Flow cytometric analysis of CEM cells using TLR2 Antibody (N-term) (bottom histogram) compared to a negative control cell (top histogram).

### RELATED PRODUCTS

- TLR1 Antibody (Cat. No. 3446-100)
- TLR10 Antibody (Cat. No. 3932-100)
- TLR11 Antibody (Cat. No. 3931-100)
- TLR3 Antibody (Cat. No. 3445-50)
- TLR4 Antibody (Cat. No. 3251-100)
- TLR5 Antibody (Cat. No. 3555-100)

**FOR RESEARCH USE ONLY! Not to be used on humans.**