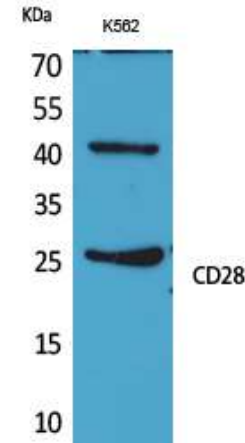


## CD28 Polyclonal Antibody

<b>CATALOG NO:</b>	A1076-100
<b>ALTERNATIVE NAMES:</b>	CD28; T-cell-specific surface glycoprotein CD28; TP44
<b>AMOUNT:</b>	100 µg
<b>IMMUNOGEN:</b>	Synthesized peptide derived from the internal region of human CD28.
<b>MOLECULAR WEIGHT:</b>	25 kDa
<b>HOST/ISOTYPE:</b>	Rabbit IgG
<b>SPECIES REACTIVITY:</b>	Human
<b>PURIFICATION:</b>	This antibody is purified by affinity-chromatography using epitope-specific immunogen.
<b>FORM:</b>	Liquid
<b>FORMULATION:</b>	Supplied in PBS containing 50% glycerol, 0.5% BSA and 0.02% sodium azide.
<b>STORAGE CONDITIONS:</b>	For long term storage store at -20°C in small aliquots to prevent freeze-thaw cycles.
<b>DESCRIPTION:</b>	Involved in T-cell activation, induction of cell proliferation and cytokine production and promotion of T-cell survival. Enhances the production of IL4 and IL10 in T-cells in conjunction with TCR/CD3 ligation and CD40L costimulation. Isoform 3 enhances CD40L-mediated activation of NF-kappa-B and kinases MAPK8 and PAK2 in T-cells.
<b>APPLICATION:</b>	Western Blot: 1:500 – 1:2000 ELISA: 1:20000.

**Note:** This information is only intended as a guide. The optimal dilutions must be determined by the user.



### RELATED PRODUCTS

- CD223 (LAG3) Polyclonal Antibody (Cat. No. A1067-100)
- CD86 Polyclonal Antibody (Cat. No. A1068-100)
- Tim-3 Antibody (Cat. No. 3808-100)
- PD-1/PDCD1 Antibody (Cat. No. 6931-50)
- CD160 Polyclonal Antibody (Cat. No. A1072-100)
- Human CellExp™ CD28, Human recombinant (Cat. No. 9237-10, -100)

**FOR RESEARCH USE ONLY! Not to be used on humans.**