

# CD44 Monoclonal Antibody

**CATALOG NO:** A1078-100

**ALTERNATIVE NAMES:** CD44 antigen, CDw44, Epican, Extracellular matrix receptor III, ECMR-III, GP90 lymphocyte homing/adhesion receptor, HUTCH-I, Heparan sulfate proteoglycan, Hermes antigen, Hyaluronate receptor, Phagocytic glycoprotein 1, PGP-1, Phagocytic glycoprotein I, PGP-I, CD44, CD44, LHR, MDU2, MDU3, MIC4

**AMOUNT:** 100 µl

**CLONE:** Hermes-3

**IMMUNOGEN:** CD44 recombinant protein

**MOLECULAR WEIGHT:** 81 kDa

**HOST/ISOTYPE:** Mouse IgG2a, K

**SPECIES REACTIVITY:** Human

**PURIFICATION:** This antibody is purified through a protein G column, followed by dialysis against PBS.

**FORM:** Liquid

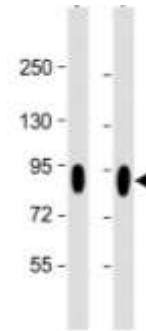
**FORMULATION:** Supplied in PBS with 0.09% (W/V) sodium azide.

**STORAGE CONDITIONS:** Maintain refrigerated at 2-8°C for up to 6 months. For long term storage store at -20°C in small aliquots to prevent freeze-thaw cycles.

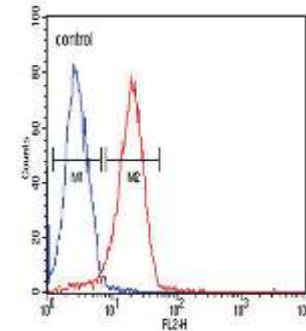
**DESCRIPTION:** The protein encoded by this gene is a cell-surface glycoprotein involved in cell-cell interactions, cell adhesion and migration. It is a receptor for hyaluronic acid (HA) and can also interact with other ligands, such as osteopontin, collagens, and matrix metalloproteinases (MMPs). This protein participates in a wide variety of cellular functions including lymphocyte activation, recirculation and homing, hematopoiesis, and tumor metastasis. Transcripts for this gene undergo complex alternative splicing that results in many functionally distinct isoforms, however, the full length nature of some of these variants has not been determined. Alternative splicing is the basis for the structural and functional diversity of this protein, and may be related to tumor metastasis.

**APPLICATION:** IHC-P; 1:10~50, WB; 1:2000, IF; 1:10~50, FC; 1:10~50

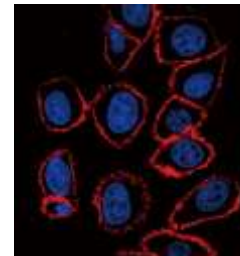
**Note:** This information is only intended as a guide. The optimal dilutions must be determined by the user.



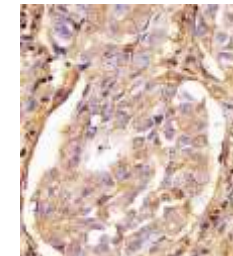
**Western blot analysis using CD44 Antibody in:**  
 Lane 1: Hela whole cell lysate  
 Lane 2: HUVEC whole cell lysate



**Flow cytometric analysis of Hela cells (right histogram) compared to a negative control cell (left histogram) using CD44 antibody**



**CD44 antibody confocal immunofluorescent analysis with Hela cell.**



**CD44 staining in human lung adenocarcinoma tissue sections by Immunohistochemistry (IHC)**

**RELATED PRODUCTS**

- HCAM Antibody (Cat. No. 3393-100)
- HCAM Blocking Peptide (Cat. No. 3393BP-100)
- Anti-human CD44 antibody (Cat. No. A1505-50)

**FOR RESEARCH USE ONLY! Not to be used on humans.**

