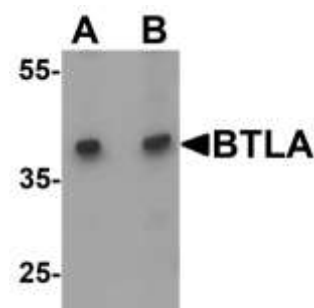


BTLA Polyclonal Antibody

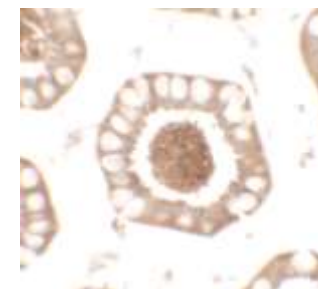
CATALOG NO:	A1082-100
ALTERNATIVE NAMES:	BTLA, CD272
AMOUNT:	50 µg
MOLECULAR WEIGHT:	Predicted: 32 kDa; Observed: 40 kDa
HOST/ISOTYPE:	Rabbit IgG
SPECIES REACTIVITY:	Human
SPECIFICITY:	BTLA antibody is human specific. At least two isoforms of BTLA are known to exist.
FORM:	Liquid
FORMULATION:	Supplied in PBS with 0.09% (W/V) sodium azide.
STORAGE CONDITIONS:	Maintain refrigerated at 2-8°C for up to 6 months. For long term storage store at -20°C in small aliquots to prevent freeze-thaw cycles.
DESCRIPTION:	The B- and T-lymphocyte attenuator (BTLA) protein is a member of the immunoglobulin superfamily containing a single immunoglobulin (Ig) domain. Like other co-inhibitory receptors such as CTLA-4 and PD-1, BTLA functions as a receptor that relays inhibitory signals to suppress the immune response, and can inhibit LPS-induced endotoxic shock by suppressing TLR4 signaling in innate immune cells. Polymorphisms in this gene have also been associated with an increased risk of rheumatoid arthritis.
APPLICATION:	WB: 1-2 µg/ml IHC: 2.5 µg/ml IF: 20 µg/ml

Note: This information is only intended as a guide. The optimal dilutions must be determined by the user.

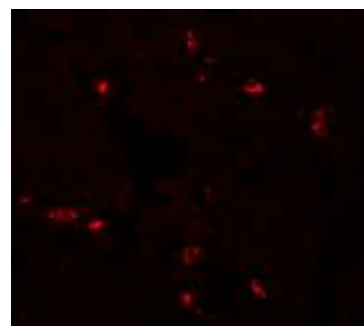


Western blot analysis of BTLA Antibody in Jurkat cell lysate at:

A: 1 µg/ml
B: 2 µg/ml



Immunohistochemistry of BTLA in human small intestine tissue with BTLA antibody.



Immunofluorescence of BTLA in human small intestine tissue with BTLA antibody

RELATED PRODUCTS

- CD223 (LAG3) Polyclonal Antibody (Cat. No. A1067-100)
- CD86 Polyclonal Antibody (Cat. No. A1068-100)
- Tim-3 Antibody (Cat. No. 3808-100)
- PD-1/PDCD1 Antibody (Cat. No. 6931-50)
- CD160 Polyclonal Antibody (Cat. No. A1072-100)
- Human CellExp™ BTLA, Human recombinant (Cat. No. 9228-10, -50)

FOR RESEARCH USE ONLY! Not to be used on humans.