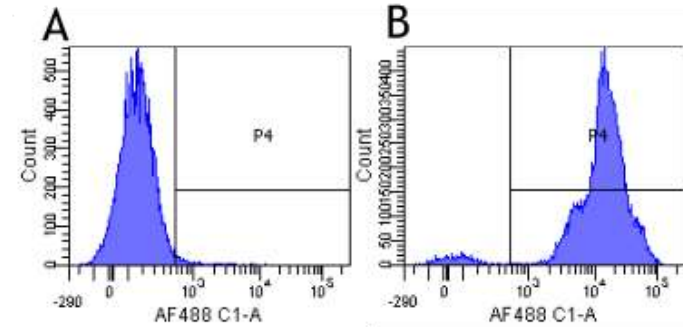


Anti-CD11a (Efalizumab), Human IgG1 Antibody

CATALOG NO:	A1089-200
ALTERNATIVE NAMES:	LFA-1; integrin alpha L
AMOUNT:	200 µg
IMMUNOGEN:	Efalizumab binds to CD11a, a subunit of leukocyte function antigen-1 (LFA-1), which is expressed on all leukocytes.
ISOTYPE /FORMAT:	Human IgG1, kappa
CLONALITY:	Monoclonal
CLONE:	hu1124
SPECIES REACTIVITY:	Human
FORM:	Liquid
PURIFICATION:	Affinity purified using Protein A
FORMULATION:	Supplied in PBS with preservative (0.02% Proclin 300)
STORAGE CONDITIONS:	Store at 4°C for upto 3 months. For long term storage, aliquot and freeze at -20°C. Avoid repeated freeze/thaw cycles.
DESCRIPTION:	Recombinant monoclonal antibody to CD11a. Manufactured using recombinant technology with variable regions (i.e. specificity) from the therapeutic antibody hu1124 (Efalizumab).
BACKGROUND:	Integrin alpha-L/beta-2 is a receptor for ICAM1, ICAM2, ICAM3 and ICAM4. It is involved in a variety of immune phenomena including leukocyte-endothelial cell interaction, cytotoxic T-cell mediated killing, and antibody dependent killing by granulocytes and monocytes.
APPLICATION:	Efalizumab binds to the LFA-1 alpha I domain blocking the ICAM-1 binding site via steric hindrance.
REFERENCE:	Bauer <i>et al.</i> Population pharmacokinetics and pharmacodynamics of the anti-CD11a antibody hu1124 in human subjects with psoriasis. <i>J Pharmacokinet Biopharm.</i> 1999 Aug; 27(4):397-420



Flow-cytometry using the anti-CD11a research biosimilar antibody Efalizumab: Human lymphocytes were stained with an isotype control or the rabbit-chimeric version of Efalizumab at a concentration of 1 µg/ml for 30 mins at RT. After washing, bound antibody was detected using AF488 conjugated donkey anti-rabbit antibody and analyzed on a FACSCanto flow-cytometer.

RELATED PRODUCTS:

- Anti-VEGF (Bevacizumab), humanized Antibody (**Cat. No. A1045-100**)
- Anti-HER2 (Trastuzumab), humanized Antibody (**Cat. No. A1046-100**)
- Anti-EGFR (Cetuximab), Chimeric Antibody (**Cat. No. A1047-100**)
- Anti-TNF-α (Adalimumab), humanized Antibody (**Cat. No. A1048-100**)
- Anti-CD20 (Rituximab), Chimeric Antibody (**Cat. No. A1049-100**)
- Anti-EGFR (Panitumumab), humanized antibody (**Cat. No. A1050-100**)
- Anti-OX40L (Oxelumab), Human IgG1 Antibody (**Cat. No. A1088-200**)
- Anti-EGFR (Matuzumab), Human IgG1 Antibody (**Cat. No. A1090-200**)
- Anti-CD4 (Clenoliximab), Human IgG4 Antibody (**Cat. No. A1091-200**)
- Anti-TNF alpha (Humicade), Human IgG4 Antibody (**Cat. No. A1093-200**)
- Anti-CD40L (Ruplizumab), Human IgG1 Antibody (**Cat. No. A1094-200**)
- Anti-Human Ephrin Type A receptor 2 (1C1), Human IgG1 Antibody (**Cat. No. A1095**)
- Anti-TNF alpha (Infliximab), Human IgG1 Antibody (**Cat. No. A1097-200**)
- Anti-IL-2R alpha (CD25) (Basiliximab), Human IgG1 Antibody (**Cat. No. A1098-200**)
- Anti-IL-2R alpha (Daclizumab), Human IgG1 Antibody (**Cat. No. A1099-200**)

FOR RESEARCH USE ONLY! Not to be used on humans.