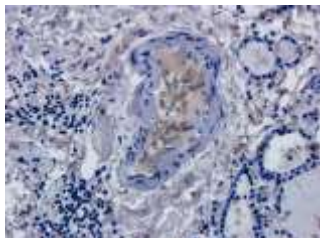
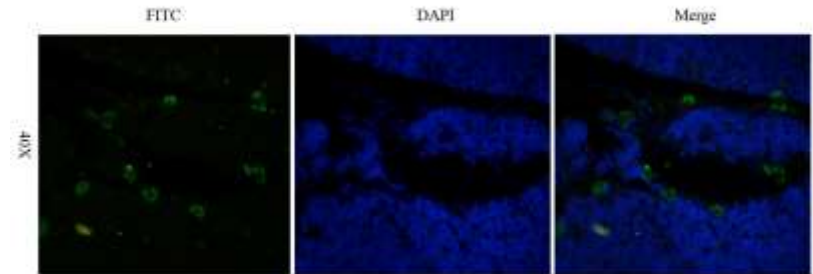


Anti-CD52 (Campath-1H), Human IgG1 Antibody

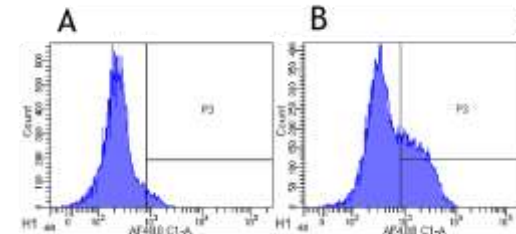
CATALOG NO:	A1105-200
ALTERNATE NAME:	CDW52; Cambridge pathology 1 antigen; Epididymal secretory protein E5; Human epididymis-specific protein 5
AMOUNT:	200 µg
ISOTYPE / FORMAT:	Human IgG1, kappa
CLONALITY:	Monoclonal
CLONE:	Campath-1H
SPECIES REACTIVITY:	Human
IMMUNOGEN:	Pk (V5) Epitope Tag (GKPIPPLLGLDST)
FORM:	Liquid
PURIFICATION:	Affinity purified using Protein A
FORMULATION:	Supplied in PBS with preservative (0.02% Proclin 300)
STORAGE CONDITIONS:	Store at 4°C for upto 3 months. For long term storage, aliquot and freeze at -20°C. Avoid repeated freeze/thaw cycles.
DESCRIPTION:	Recombinant monoclonal antibody to CD52. Manufactured using recombinant technology with variable regions (i.e. specificity) from the therapeutic antibody Campath-1H.
BACKGROUND:	Human CD52 antigen, also known as CAMPATH-1. CD52 is expressed at high density by lymphocytes, monocytes, eosinophils, thymocytes and macrophages. It is expressed by most lymphoid derived malignancies, although expression on myeloma cells is variable.
APPLICATION:	ELISA; IF; IHC-Fr; IP; RIA; WB
REFERENCE:	Riechmann L, Clark M, Waldmann H, Winter G. Reshaping human antibodies for therapy. Nature. 1988 Mar 24; 332 (6162):323-7. PMID:3127726



Immunohistochemical staining of human thyroid cancer using anti-CD52 CD52 (Campath-1H), Human IgG1 antibody at 5 µg/ml



Immunofluorescent staining of rat thymus using anti-CD52 (Campath-1H), Human IgG1 antibody at 5 µg/ml



Flow-cytometry using anti-CD52 antibody Campath-1H: Rhesus monkey lymphocytes were stained with an isotype control or the rabbit-chimeric version of Campath-1H at a concentration of 1 µg/ml for 30 mins at RT. After washing, bound antibody was detected using a AF488 conjugated donkey anti-rabbit antibody and cells analysed on a flow-cytometer.

RELATED PRODUCTS:

- Anti-CD20 (Rituximab), Chimeric Antibody (**Cat. No. A1049-100**)
- Anti-EGFR (Panitumumab), humanized antibody (**Cat. No. A1050-100**)
- Anti-OX40L (Oxelumab), Human IgG1 Antibody (**Cat. No. A1088-200**)
- Anti-CD11a (Efalizumab), Human IgG1 Antibody (**Cat. No. A1089-200**)
- Anti-EGFR (Matuzumab), Human IgG1 Antibody (**Cat. No. A1090-200**)
- Anti-CD4 (Clenoliximab), Human IgG4 Antibody (**Cat. No. A1091-200**)
- Anti-TNF alpha (Humicade), Human IgG4 Antibody (**Cat. No. A1093-200**)
- Anti-CD40L (Ruplizumab), Human IgG1 Antibody (**Cat. No. A1094-200**)
- Anti-TNF alpha (Infliximab), Human IgG1 Antibody (**Cat. No. A1097-200**)

FOR RESEARCH USE ONLY! Not to be used on humans.