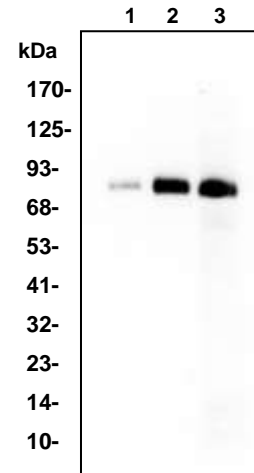


## only Lactoferrin Antibody

<b>CATALOG NO:</b>	A1108-30T 30 µg (Trial size) A1108-100 100 µg
<b>ALTERNATIVE NAMES:</b>	Growth-inhibiting protein 12, Talalactoferrin, Lactotransferrin
<b>CONCENTRATION:</b>	0.5 mg/ml
<b>IMMUNOGEN:</b>	Human Lactoferrin (Cat. No. 7550)
<b>INTERNAL ID:</b>	BV-P89
<b>HOST/ISOTYPE:</b>	Rabbit IgG
<b>SPECIES REACTIVITY:</b>	Human
<b>MOLECULAR WT:</b>	78 kDa
<b>PURIFICATION:</b>	Affinity purified rabbit IgG
<b>FORM:</b>	Liquid
<b>FORMULATION:</b>	In PBS pH 7.2, 0.01 % BSA, 0.03 % ProClin® and 50 % glycerol
<b>STORAGE CONDITIONS:</b>	Store at -20°C. For long term storage, aliquot and freeze at -70°C. Avoid repeated freeze/thaw cycles.
<b>DESCRIPTION:</b>	Lactoferrin is a glycoprotein present in exocrine secretions and in the secondary granules of polymorphonuclear neutrophils. It is the iron binding protein in milk. Lactoferrin is known to regulate intestinal iron absorption, and to participate in the defense against bacteria.
<b>APPLICATION:</b>	WB: 1-4 µg

**Note:** This information is only intended as a guide. The optimal dilutions must be determined by the user.



**Western blot with human Lactoferrin antibody in:**

Lane 1: h Lactoferrin 2 ng  
Lane 2: h Lactoferrin 10 ng  
Lane 3: h Lactoferrin 50 ng

### RELATED PRODUCTS

Lactoferrin, Human Milk (**Cat. No. 7550-2, -10**)  
Lactoferrin, Human Neutrophil (**Cat. No. 4092-10**)

**FOR RESEARCH USE ONLY! Not to be used on humans.**