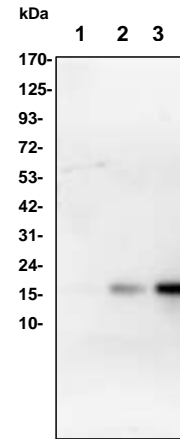


only Lysozyme Antibody

CATALOG NO:	A1110-30T 30 µg (Trial size) A1110-100 100 µg
ALTERNATIVE NAMES:	1,4-beta-N-acetylmuramidase C, LYZ, LZM
CONCENTRATION:	0.5 mg/ml
IMMUNOGEN:	Human Lysozyme (Cat. No. 8005)
INTERNAL ID:	BV-P107
MOLECULAR WEIGHT:	16 kDa
HOST/ISOTYPE:	Rabbit IgG
SPECIES REACTIVITY:	Human
PURIFICATION:	Affinity purified rabbit IgG
FORM:	Liquid
FORMULATION:	0.5 mg/ml of antibody in PBS pH 7.2, 0.01 % BSA, 0.03 % ProClin® and 50 % glycerol
STORAGE CONDITIONS:	Store at -20°C. Avoid repeated freeze/thaw cycles.
DESCRIPTION:	Lysozymes have primarily a bacteriolytic function; those in tissues and body fluids are associated with the monocyte-macrophage system and enhance the activity of immunoagents. It has an identical amino acid sequence and physico-chemical properties of native lysozyme. The enzyme cleaves the (1,4) linkage between N-acetylglucosamine and N-acetylmuramic acid of the peptidoglycan component in the bacterial cell wall. It exhibits four times more activity than commercial chicken lysozyme and is useful in the recovery of proteins expressed in bacteria (e.g. E. coli). EZ Lysozyme is designed for gentle cell lysis which leads to a minimal risk of protein denaturation.
APPLICATION:	WB: 1-4 µg

Note: This information is only intended as a guide. The optimal dilutions must be determined by the user.



Western blot with human Lysozyme antibody:

Lane 1: h Lysozyme 2 ng.
Lane 2: h Lysozyme 10 ng
Lane 3: h Lysozyme 50 ng.

RELATED PRODUCTS

- EZLys™ Lysozyme, Human (**Cat. No. 8005-1G, -5G**)
- Lysozyme Activity Assay Kit (Fluorometric) (**Cat. No. K236-100**)
- Lysozyme Inhibitor Screening Kit (**Cat. No. K237-100**)

FOR RESEARCH USE ONLY! Not to be used on humans.