

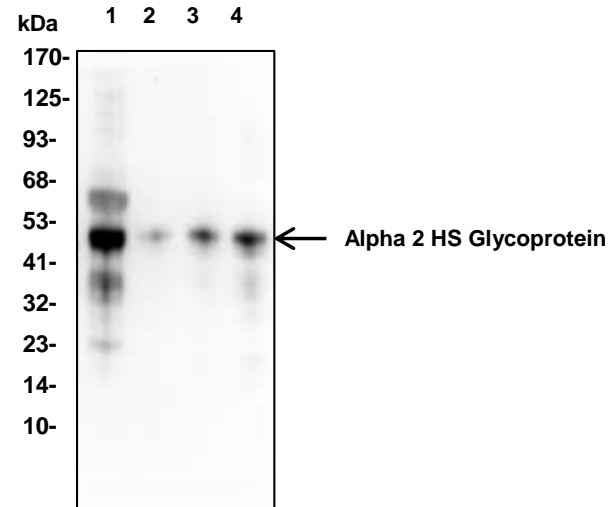
only Alpha 2 HS Glycoprotein Antibody

CATALOG NO:	A1111-30T 30 µg (Trial size) A1111-100 100 µg
ALTERNATIVE NAMES:	Alpha-2-Z-globulin, Ba-alpha-2-glycoprotein, Fetuin-A
CONCENTRATION:	0.5 mg/ml
IMMUNOGEN:	Human alpha 2 SH Glycoprotein (Cat. No. 7548)
INTERNAL ID:	BV-P86
MOLECULAR WEIGHT:	49 kDa
HOST/ISOTYPE:	Rabbit IgG
SPECIES REACTIVITY:	Human
PURIFICATION:	Affinity purified rabbit IgG
FORM:	Liquid
FORMULATION:	0.5 mg/ml of antibody in PBS pH 7.2, 0.01 % BSA, 0.03 % ProClin® and 50 % glycerol
STORAGE CONDITIONS:	Store at -20°C. Avoid repeated freeze/thaw cycles.

DESCRIPTION: Alpha 2 macroglobulin (A2M) is a major serum protein found at concentrations of 240 mg per 100 ml in men and 290 mg per 100 ml in women. It functions as a broad-spectrum protease-binding protein. It is produced by the liver, and is a major component of the alpha-2 band in protein electrophoresis. It is a large plasma glycoprotein that has long been known as an irreversible inhibitor of a variety of proteinases. More recently, it has been reported that numerous growth factors, cytokines and hormones bind to alpha 2M through diverse mechanisms. A2M is also produced in the brain where it binds multiple extracellular ligands and is internalized by neurons and astrocytes. In the brain of Alzheimer's disease (AD) patients, A2M has been localized to diffuse amyloid plaques. A2M also binds soluble beta-amyloid, of which it mediates degradation. Protease-conjugated alpha2-macroglobulin is selectively bound by cells contacting the body fluids and alpha2-macroglobulin and its protease cargo are then internalized and degraded in secondary lysosomes of those cells.

APPLICATION: Western blot: 1-4 µg

Note: This information is only intended as a guide. The optimal dilutions must be determined by the user.



Western blot with human alpha 2 HS Glycoprotein antibody in:

- Lane 1: h serum (1 ug)
- Lane 2: h alpha 2 HS Glycoprotein (2 ng)
- Lane 3: h alpha 2 HS Glycoprotein (10 ng)
- Lane 4: h alpha 2 HS Glycoprotein (50 ng)

RELATED PRODUCTS

- Alpha 1 Acid Glycoprotein, Human Plasma (**Cat. No. 7547-10**)
- Human CellExp™ Fetuin A/ASHG, Human Recombinant (**Cat. No. 7142-10, -50**)
- Alpha 2 HS Glycoprotein, Human Plasma (**Cat. No. 7548-1**)

FOR RESEARCH USE ONLY! Not to be used on humans.