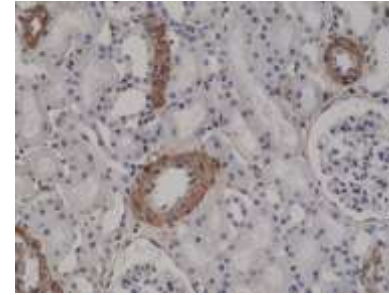


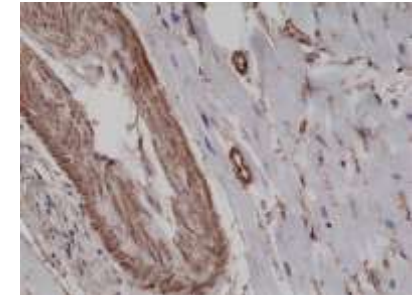
## Anti-ACTA2 Rabbit Monoclonal Antibody

<b>CATALOG NO:</b>	A1118-50
<b>ALTERNATIVE NAMES:</b>	alpha smooth muscle Actin, Alpha-actin-2, Cell growth-inhibiting gene 46 protein
<b>AMOUNT:</b>	50 µl
<b>CLONE:</b>	RM253
<b>IMMUNOGEN:</b>	A synthetic peptide corresponding to the N-terminus of human alpha smooth muscle Actin
<b>MOLECULAR WEIGHT:</b>	42 kDa
<b>HOST/ISOTYPE:</b>	Rabbit IgG
<b>SPECIES REACTIVITY:</b>	Human, Mouse
<b>PURIFICATION:</b>	Protein A affinity purified from an animal origin-free culture supernatant
<b>FORM:</b>	Liquid
<b>FORMULATION:</b>	50% Glycerol/PBS with 1% BSA and 0.09% sodium azide
<b>STORAGE CONDITIONS:</b>	For long term storage store at -20°C in small aliquots to prevent freeze-thaw cycles.
<b>DESCRIPTION:</b>	Actins are highly conserved proteins expressed in all eucaryotic cells. Actin filaments form part of the cytoskeleton and play essential roles in regulating cell shape and movement. Six distinct actin isotypes have been identified in mammalian cells. Each is encoded by a separated gene and is expressed in a developmentally regulated and tissue-specific manner, alpha and beta cytoplasmic actins are expressed in a wide variety of cells; whereas, expression of alpha skeletal, alpha cardiac, alpha vascular, and gamma enteric actins are more restricted to specialized muscle cell type. Smooth muscle alpha actin is of further interest because it is one of a few genes whose expression is relatively restricted to vascular smooth muscle cells. Furthermore, expression of smooth muscle alpha actin is regulated by hormones, cell proliferation, and altered by pathological conditions including oncogenic transformation and atherosclerosis.
<b>APPLICATION:</b>	IHC: 1:1000 -1:2500 dilution; WB: 1:1000 - 1:2000 dilution

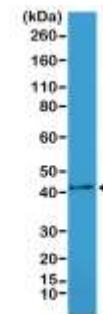
**Note:** This information is only intended as a guide. The optimal dilutions must be determined by the user.



Immunohistochemical staining of formalin fixed and paraffin embedded human kidney tissue sections using Anti-ACTA2 antibody at a 1:2500 dilution.



Immunohistochemical staining of formalin fixed and paraffin embedded human heart tissue sections using Anti-ACTA2 antibody at a 1:2500 dilution.



Western Blot of mouse heart tissue lysate, using Anti-ACTA2 antibody at a 1:1000 dilution.

### RELATED PRODUCTS

- Beta Actin Monoclonal Antibody (Cat. No. A1031-100)
- Beta-Actin Antibody (Clone BA3R) (Cat. No. 3598R-100)
- Beta-Actin Antibody (Cat. No. 3662-100)
- Tubulin Antibody (Cat. No. 3708-100)

**FOR RESEARCH USE ONLY! Not to be used on humans.**