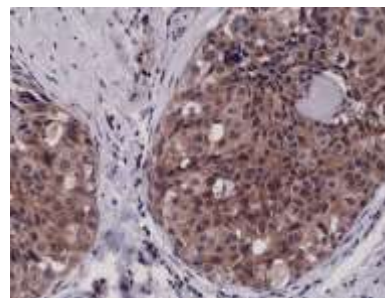
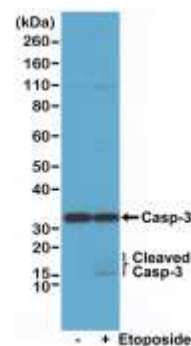


Anti-Caspase-3 Rabbit Monoclonal Antibody

CATALOG NO:	A1120-50
ALTERNATIVE NAMES:	CPP32, CASP3, apopain, procaspase3, CPP32B, SCA-1, CPP-32, Apopain, Yama
AMOUNT:	50 µl
CLONE:	RM250
IMMUNOGEN:	A synthetic peptide corresponding to residues within human Caspase-3 subunit p17
MOLECULAR WEIGHT:	31 kDa
HOST/ISOTYPE:	Rabbit IgG
SPECIES REACTIVITY:	Human
PURIFICATION:	Protein A affinity purified from an animal origin-free culture supernatant
FORM:	Liquid
FORMULATION:	50% Glycerol/PBS with 1% BSA and 0.09% sodium azide
SPECIFICITY:	This antibody reacts to human full length caspase-3 (35 kDa) and the large fragment of caspase-3 resulting from cleavage (17 kDa).
STORAGE CONDITIONS:	For long term storage store at -20°C in small aliquots to prevent freeze-thaw cycles.
DESCRIPTION:	Caspase family of cysteine proteases has been shown to play a key role in apoptosis. Caspase-3 is synthesized as an inactive pro-enzyme (32 kDa) that is processed in cells undergoing apoptosis by self-proteolysis and/or cleavage by another upstream protease. The processed form of caspase-3 consists of large (17 kD) and small (12 kD) subunits which associate to form an active enzyme. The active caspase-3 proteolytically cleaves and activates other caspases, as well as relevant targets in the cells (e.g., PARP and DFF).
APPLICATION:	IHC: 1:1000 -1:2500 dilution; WB: 1:1000 - 1:2000 dilution Note: This information is only intended as a guide. The optimal dilutions must be determined by the user.



Immunohistochemical staining of formalin fixed and paraffin embedded human breast cancer tissue sections using Anti-Caspase-3 antibody at a 1:2500 dilution



Western Blot of Jurkat cell lysate, untreated or treated with etoposide, using Anti-Caspase-3 antibody at a 1:1000 dilution

RELATED PRODUCTS

- Caspase-3 Antibody (**Cat. No. 3138-100**)
- Caspase-3 Antibody (Clone C33) (**Cat. No. 3004-100**)
- Caspase-3 Blocking Peptide (**Cat. No. 3015BP-50**)
- Caspase-3 Blocking Peptide (**Cat. No. 3138BP-50**)
- Caspase-3 Colorimetric Assay Kit (**Cat. No. K106-100**)
- Caspase-3 Fluorometric Assay Kit (**Cat. No. K105-100**)
- Caspase-3 Inhibitor Drug Screening Kit (Fluorometric) (**Cat. No. K153-100**)
- Caspase-3 Inhibitor Q-DEVD-Oph (**Cat. No. 1175-1**)
- Caspase-3, human recombinant (**Cat. No. 1083-10**)

FOR RESEARCH USE ONLY! Not to be used on humans.