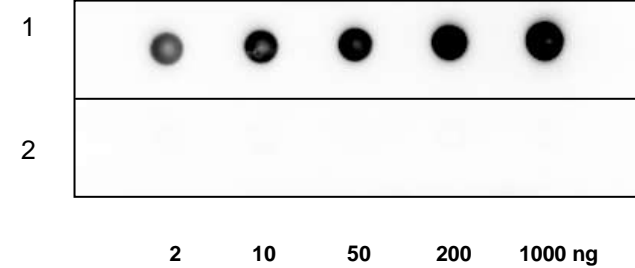


only Anti-Collagen-I Antibody

CATALOG NO:	A1121-30T 30 µg (Trial size) A1121-100 100 µg
ALTERNATIVE NAMES:	Alpha-1 type I collagen, Collagen alpha-1(I) chain
CONCENTRATION:	0.5 mg/ml
IMMUNOGEN:	Recombinant human collagen-I
INTERNAL ID:	BV-P3
HOST/ISOTYPE:	Rabbit IgG
PURIFICATION:	Affinity purified rabbit IgG
FORM:	Liquid
FORMULATION:	0.5 mg/ml of antibody in PBS pH 7.2, 0.01 % BSA, 0.03 % ProClin® and 50 % glycerol
STORAGE CONDITIONS:	Store at -20°C. Avoid repeated freeze/thaw cycles.
DESCRIPTION:	Collagen, a major component of the extracellular matrix, is a fibrous protein that provides tensile strength to tissues giving them structural integrity. Collagen and its derivative, gelatin, have been widely used in medical, pharmaceutical and consumer products for more than 100 years. Collagens are fibrous, extracellular matrix proteins with high tensile strength and are the major components of connective tissue, such as tendons and cartilage. All collagens contain a triple helix domain and frequently show lateral self-association in order to form complex connective tissues. Several collagens also play a role in cell adhesion, important for maintaining normal tissue architecture and function. The extensive family of COL gene products (collagens) is composed of several chain types, including fibril-forming interstitial collagens (types I, II, III and V) and basement membrane collagens (type IV), each type containing multiple isoforms.
APPLICATION:	Western blot: 1-4 µg Dot blot: 1-4 µg

Note: This information is only intended as a guide. The optimal dilutions must be determined by the user.



Dot blot analysis of collagen using anti- Collagen antibody:

Lane 1: rh Collagen-I
Lane 2: BSA

RELATED PRODUCTS:

- Collagen-III, human recombinant (**Cat. No. 4797-1, -5**)
- Collagenase Activity Colorimetric Assay Kit (**Cat. No. K792-100**)
- Collagenase Inhibitor Screening Kit (Fluorometric) (**Cat. No. K833-100**)
- Endostatin, human recombinant (**Cat. No. 4799-100**)
- EZCell™ Cell Invasion Assay (Collagen I), 96-well, 8 µm (**Cat. No. 916-100**)
- EZCell™ Cell Invasion Assay Kit (Collagen I), 24-well, 8 µm (**Cat. No. 917-24**)
- EZCell™ Cell Invasion Assay (Collagen IV), 96-well, 8 µm (**Cat. No. 918-100**)
- EZCell™ Cell Invasion Assay (Collagen IV), 24-well, 8 µm (**Cat. No. 919-24**)

FOR RESEARCH USE ONLY! Not to be used on humans.