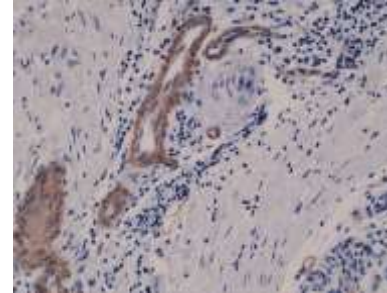


Anti-CD146 Rabbit Monoclonal Antibody

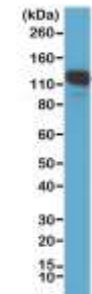
CATALOG NO:	A1122-50
ALTERNATIVE NAMES:	MCAM; MUC18; Cell surface glycoprotein MUC18; Cell surface glycoprotein P1H12; Melanoma cell adhesion molecule; Melanoma-associated antigen A32; Melanoma-associated antigen MUC18; S-endo 1 endothelial-associated antigen
AMOUNT:	50 µl
CLONE:	RM249
IMMUNOGEN:	A synthetic peptide corresponding to the residues near C-terminus of human CD146
MOLECULAR WEIGHT:	~110 kDa
HOST/ISOTYPE:	Rabbit IgG
SPECIES REACTIVITY:	Human
PURIFICATION:	Protein A affinity purified from an animal origin-free culture supernatant
FORM:	Liquid
FORMULATION:	50% Glycerol/PBS with 1% BSA and 0.09% sodium azide
SPECIFICITY:	This antibody reacts to human CD146 (Cell surface glycoprotein MUC18). This antibody may also react to mouse or rat CD146, as predicted by immunogen homology.
STORAGE CONDITIONS:	For long term storage store at -20°C in small aliquots to prevent freeze-thaw cycles.
DESCRIPTION:	The CD146 antigen, also known as MCAM, is an integral membrane glycoprotein belonging to the immunoglobulin superfamily. CD146 contains the characteristic immunoglobulin-like domains (V-V-C2-C2-C2), a transmembrane region and a short cytoplasmic tail. The CD146 expression is detected in endothelial cells in vascular tissue throughout the body, and plays a role in cell adhesion, as well as in cohesion of the endothelial monolayer at intercellular junctions in vascular tissue. As a Ca ²⁺ -independent cell adhesion molecule involved in heterophilic cell to cell interactions and a surface receptor, CD146 triggers tyrosine phosphorylation of FYN and PTK2 and subsequently induced signal transduction, proteolysis, or immune recognition. CD146 is expressed predominantly on metastatic lesions and advanced primary tumors, and has been suggested to play an important role in tumor progression and the development of metastasis in certain human carcinomas.

APPLICATION: IHC: 1:200 -1:500 dilution; WB: 1:1000 - 1:2000 dilution

Note: This information is only intended as a guide. The optimal dilutions must be determined by the user.



Immunohistochemical staining of formalin fixed and paraffin embedded human breast cancer tissue sections using Anti-CD146 antibody at a 1:400 dilution.



Western Blot of A375 cell lysate, using Anti-CD146 antibody at a 1:1000 dilution, showed CD146 (~110 kDa) expression in A375 cells.

RELATED PRODUCTS

- CD146/MCAM Antibody (CT) (Cat. No. 6801-100)

FOR RESEARCH USE ONLY! Not to be used on humans.