

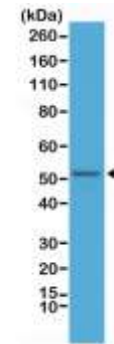
Anti-GFAP Rabbit Monoclonal Antibody

CATALOG NO:	A1124-50
ALTERNATIVE NAMES:	GFAP, Glial fibrillary acidic protein
AMOUNT:	50 µl
CLONE:	RM246
IMMUNOGEN:	A peptide corresponding to the N-terminus of human GFAP
MOLECULAR WEIGHT:	~50 kDa
HOST/ISOTYPE:	Rabbit IgG
SPECIES REACTIVITY:	Human, Mouse
PURIFICATION:	Protein A affinity purified from an animal origin-free culture supernatant
FORM:	Liquid
FORMULATION:	50% Glycerol/PBS with 1% BSA and 0.09% sodium azide
SPECIFICITY:	RM246 reacts to human and mouse GFAP (Glial fibrillary acidic protein).
STORAGE CONDITIONS:	For long term storage store at -20°C in small aliquots to prevent freeze-thaw cycles.
DESCRIPTION:	GFAP, Glial fibrillary acidic protein is an intermediate filament protein. It was found in astrocytes cells as a cell specific marker in the central nervous system development. GFAP is defective in Alexander disease. But it is highly expressed in Astrogliosis which is a result of some diseases, such as AIDS, dementia and inflammatory demyelination diseases.
APPLICATION:	IHC: 1:200 -1:500 dilution; WB: 1:1000 - 1:3000 dilution

Note: This information is only intended as a guide. The optimal dilutions must be determined by the user.



Immunohistochemical staining of formalin fixed and paraffin embedded human brain tissue sections using Anti-GFAP antibody at a 1:500 dilution.



Western Blot of mouse brain tissue lysate, using Anti-GFAP antibody at a 1:2500 dilution, showed GFAP (~50 kDa) expression in mouse brain.

RELATED PRODUCTS:

- GFAP Polyclonal Antibody (Cat. No. 3206-200)
- GFAP Blocking Peptide (Cat. No. 3206BP-50)

FOR RESEARCH USE ONLY! Not to be used on humans.