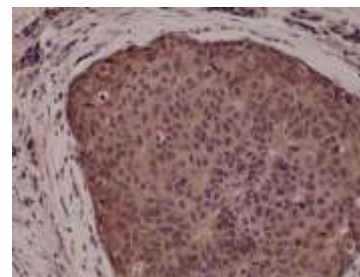


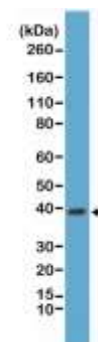
## Anti-p38 MAPK Rabbit Monoclonal Antibody

<b>CATALOG NO:</b>	A1125-50
<b>ALTERNATIVE NAMES:</b>	Mitogen-activated protein kinase 14, MK14, Mapk14, Mitogen-activated protein kinase p38alpha, MAP kinase p38alpha, CRK1, Csbp1, Csbp2, Cytokine suppressive anti-inflammatory drug-binding protein, CSAID-binding protein, CSBP, MAX--interacting protein 2, MAP kinase MXI2, SAPK2A
<b>AMOUNT:</b>	50 µl
<b>CLONE:</b>	RM245
<b>IMMUNOGEN:</b>	A peptide corresponding to human p38 MAPK
<b>MOLECULAR WEIGHT:</b>	~38 kDa
<b>HOST/ISOTYPE:</b>	Rabbit IgG
<b>SPECIES REACTIVITY:</b>	Human
<b>PURIFICATION:</b>	Protein A affinity purified from an animal origin-free culture supernatant
<b>FORM:</b>	Liquid
<b>FORMULATION:</b>	50% Glycerol/PBS with 1% BSA and 0.09% sodium azide
<b>SPECIFICITY:</b>	This antibody reacts to human p38 MAPK. This antibody may also react to rat and mouse p38 MAPK, as predicted by immunogen homology
<b>STORAGE CONDITIONS:</b>	For long term storage store at -20°C in small aliquots to prevent freeze-thaw cycles
<b>DESCRIPTION:</b>	p38 MAP kinase is the mammalian homologue of the yeast HOG kinase and participates in a cascade controlling cell cellular responses to cytokines and stress. Like the SAPK/JNK pathway, p38 MAP kinase is activated by a variety of cellular stresses including inflammatory cytokines, UV light and growth factors, etc. Activated p38 MAP kinase has been shown to phosphorylate and activate MAPKAP kinase-2 and to phosphorylate the transcription factors ATF-2 and Max.
<b>APPLICATION:</b>	IHC: 1:1000 -1:5000 dilution; WB: 1:1000 - 1:2000 dilution

**Note:** This information is only intended as a guide. The optimal dilutions must be determined by the user.



Immunohistochemical staining of formalin fixed and paraffin embedded human breast cancer tissue sections using Anti-p38 MAPK rabbit monoclonal antibody at a 1:5000 dilution.



Western Blot of HeLa cells lysates using Anti-p38 MAPK rabbit monoclonal antibody at a 1:1000 dilution, showed a band of p38 MAPK (~38 kDa) expressed in HeLa cells.

### RELATED PRODUCTS:

- p38 MAP Kinase Antibody (Cat. No. 3114-100)
- p42/44 MAPK Antibody (Cat. No. 3542-100)
- p44/42 MAPK (Erk1/2) Antibody (Cat. No. 3085R-100)
- P44/p42 MAPK (Erk1/2) Blocking Peptide (Cat. No. 3085RBP-50)
- PathwayReady™ MAP Kinase Signaling Inhibitor Panel (Cat. No. K862-7)
- Phospho-Erk1/2 Antibody (Cat. No. 3441-100)
- Phospho-MAPKAPK-2 Antibody (Cat. No. 3434-100)
- Phospho-p38 MAPK Antibody (Cat. No. 3438-100)

**FOR RESEARCH USE ONLY! Not to be used on humans.**