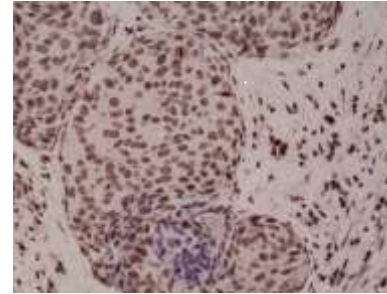


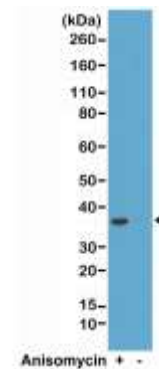
Anti-Phospho-p38 MAPK (Thr180/Tyr182) Rabbit Monoclonal Antibody

CATALOG NO:	A1127-50
ALTERNATIVE NAMES:	p38MAPK, p38-MAPK, p38 Mitogen Activated Protein Kinase, Mxi2, MAX-interacting protein 2, CSBP1, CSBP2, CSPB1, Csaisd ,APK2A, stress-activated protein kinase 2A, p38, p38 Alpha, MAPK14, Mitogen Activated Protein Kinase 14, Exip, PRKM14, PRKM15, RK
AMOUNT:	50 µl
CLONE:	RM243
IMMUNOGEN:	A phospho-peptide corresponding to human Phospho-p38 MAPK (Thr180/Tyr182)
MOLECULAR WEIGHT:	~38 kDa
HOST/ISOTYPE:	Rabbit IgG
SPECIES REACTIVITY:	Human
PURIFICATION:	Protein A affinity purified from an animal origin-free culture supernatant
FORM:	Liquid
FORMULATION:	50% Glycerol/PBS with 1% BSA and 0.09% sodium azide
SPECIFICITY:	This antibody reacts to p38 MAPK only when dual phosphorylation at Thr180 and Tyr182 is observed. There is no cross-reactivity with p38 MAPK without dual phosphorylation at Thr180 and Tyr182.
STORAGE CONDITIONS:	For long term storage store at -20°C in small aliquots to prevent freeze-thaw cycles
DESCRIPTION:	p38 MAP kinase is the mammalian homologue of the yeast HOG kinase and participates in a cascade controlling cellular responses to cytokines and stress. Like the SAPK/JNK pathway, p38 MAP kinase is activated by a variety of cellular stresses including inflammatory cytokines, UV light and growth factors, etc. Activated p38 MAP kinase has been shown to phosphorylate and activate MAPKAP kinase-2 and to phosphorylate the transcription factors ATF-2 and Max.
APPLICATION:	IHC: 1:1000 -1:2000 dilution; WB: 1:500 - 1:1000 dilution

Note: This information is only intended as a guide. The optimal dilutions must be determined by the user.



Immunohistochemical staining of formalin fixed and paraffin embedded human breast cancer tissue sections using Anti-Phospho-p38 MAPK (Thr180/Tyr182) monoclonal antibody at a 1:1000 dilution.



Western Blot of HeLa cell lysates, treated or nontreated with anisomycin using Anti-Phospho-p38 MAPK (Thr180/Tyr182) monoclonal antibody at a 1:2000 dilution, showed a band of Phospho-p38 MAPK (~38 kDa) in anisomycin-treated HeLa cells.

RELATED PRODUCTS:

- p38 MAP Kinase Antibody (Cat. No. 3114-100)
- p42/44 MAPK Antibody (Cat. No. 3542-100)
- p44/42 MAPK (Erk1/2) Antibody (Cat. No. 3085R-100)
- P44/p42 MAPK (Erk1/2) Blocking Peptide (Cat. No. 3085RBP-50)
- PathwayReady™ MAP Kinase Signaling Inhibitor Panel (Cat. No. K862-7)
- Phospho-Erk1/2 Antibody (Cat. No. 3441-100)
- Phospho-MAPKAPK-2 Antibody (Cat. No. 3434-100)
- Phospho-p38 MAPK Antibody (Cat. No. 3438-100)

FOR RESEARCH USE ONLY! Not to be used on humans.