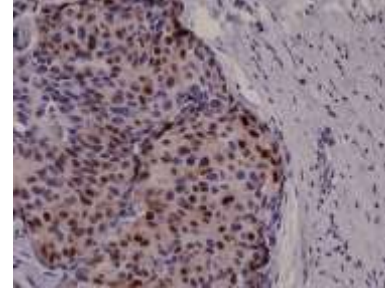


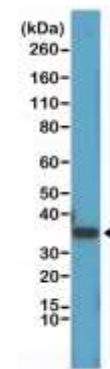
Anti-Cyclin D1, Rabbit Monoclonal Antibody

CATALOG NO:	A1129-50
ALTERNATIVE NAMES:	G1/S-specific cyclin-D1, B-cell lymphoma 1 protein, BCL-1, PRAD1
AMOUNT:	50 µl
CLONE:	RM241
IMMUNOGEN:	A peptide corresponding to Cyclin D1
MOLECULAR WEIGHT:	~34 kDa
HOST/ISOTYPE:	Rabbit IgG
SPECIES REACTIVITY:	Human
PURIFICATION:	Protein A affinity purified from an animal origin-free culture supernatant
FORM:	Liquid
FORMULATION:	50% Glycerol/PBS with 1% BSA and 0.09% sodium azide
SPECIFICITY:	RM241 reacts to human Cyclin D1. This antibody may also react to bovine, mouse or rat Cyclin D1, as predicted by immunogen homology.
STORAGE CONDITIONS:	For long term storage store at -20°C in small aliquots to prevent freeze-thaw cycles
DESCRIPTION:	Regulatory component of the cyclin D1-CDK4 (DC) complex that phosphorylates and inhibits members of the retinoblastoma (RB) protein family including RB1 and regulates the cell-cycle during G1/S transition. Phosphorylation of RB1 allows dissociation of the transcription factor E2F from the RB/E2F complex and the subsequent transcription of E2F target genes which are responsible for the progression through the G1 phase. Hypophosphorylates RB1 in early G1 phase. Cyclin D-CDK4 complexes are major integrators of various mitogenic and antimitogenic signals. Also substrate for SMAD3, phosphorylating SMAD3 in a cell-cycle-dependent manner and repressing its transcriptional activity. Component of the ternary complex, cyclin D1/CDK4/CDKN1B, required for nuclear translocation and activity of the cyclin D-CDK4 complex. Exhibits transcriptional corepressor activity with INSM1 on the NEUROD1 and INS promoters in a cell cycle-independent manner.
APPLICATION:	IHC: 1:500 -1:1000 dilution; WB: 1:1000 - 1:2000 dilution

Note: This information is only intended as a guide. The optimal dilutions must be determined by the user.



Immunohistochemical staining of formalin fixed and paraffin embedded human breast cancer tissue sections using Anti-Cyclin D1 monoclonal antibody at a 1:1000 dilution.



Western Blot of HeLa cell lysates using Anti-Cyclin D1 monoclonal antibody at a 1:1000 dilution, showed a band of Cyclin D1 (~34 kDa) expressed in HeLa cells.

RELATED PRODUCTS:

- Cyclin E1 Antibody (Cat. No. 6932-50)
- Cyclin F Antibody (Cat. No. 6933-50)
- Cyclin G1 Antibody (Cat. No. 6934-50)
- Cyclin-dependent kinase inhibitor 2A_TAT, Human Recombinant (Cat. No. P1009-20, -100)
- Cyclin-dependent kinase inhibitor 2A, Human Recombinant (Cat. No. P1008-20, -100)

FOR RESEARCH USE ONLY! Not to be used on humans.