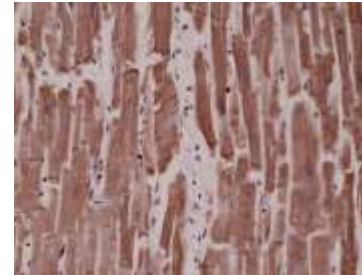


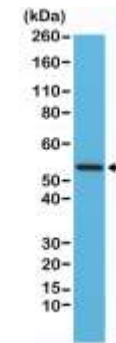
## Anti-Desmin Rabbit Monoclonal Antibody

<b>CATALOG NO:</b>	A1131-50
<b>AMOUNT:</b>	50 µl
<b>CLONE:</b>	RM234
<b>IMMUNOGEN:</b>	A peptide corresponding to human Desmin
<b>MOLECULAR WEIGHT:</b>	~54 kDa
<b>HOST/ISOTYPE:</b>	Rabbit IgG
<b>SPECIES REACTIVITY:</b>	Human, mouse
<b>PURIFICATION:</b>	Protein A affinity purified from an animal origin-free culture supernatant
<b>FORM:</b>	Liquid
<b>FORMULATION:</b>	50% Glycerol/PBS with 1% BSA and 0.09% sodium azide
<b>SPECIFICITY:</b>	This antibody reacts to human and mouse Desmin. This antibody may also react to rat and Bovine Desmin, as predicted by immunogen homology
<b>STORAGE CONDITIONS:</b>	For long term storage store at -20°C in small aliquots to prevent freeze-thaw cycles
<b>DESCRIPTION:</b>	Desmin are class-III intermediate filaments found in muscle cells. In adult striated muscle they form a fibrous network connecting myofibrils to each other and to the plasma membrane from the periphery of the Z-line structures.
<b>APPLICATION:</b>	IHC: 1:1000 -1:4000 dilution; WB: 1:1000 - 1:2000 dilution

**Note: This information is only intended as a guide. The optimal dilutions must be determined by the user.**



Immunohistochemical staining of formalin fixed and paraffin embedded human heart tissue sections using Anti-Desmin monoclonal antibody at a 1:4000 dilution



Western Blot of mouse heart tissue lysates using Anti-Desmin monoclonal antibody at a 1:1000 dilution, showed a band of Desmin (~54 kDa) expressed in mouse heart

### RELATED PRODUCTS:

- Desmin (Human) ELISA Kit (Cat. No. K4190-100)

**FOR RESEARCH USE ONLY! Not to be used on humans.**