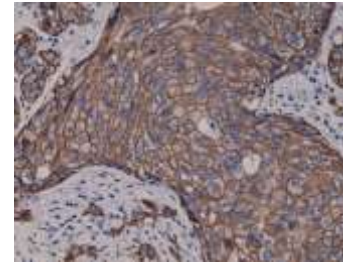


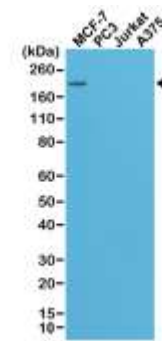
Anti-HER2 (c-erbB-2), Rabbit Monoclonal Antibody

CATALOG NO:	A1134-50
ALTERNATIVE NAMES:	Metastatic lymph node gene 19 protein, MLN 19, HER2, MLN19, NEU, NGL, ERBB2
AMOUNT:	50 µl
CLONE:	RM228
IMMUNOGEN:	A peptide corresponding to the C-terminus of Human c-erbB-2/HER-2
HOST/ISOTYPE:	Rabbit IgG
SPECIES REACTIVITY:	Human
PURIFICATION:	Protein A affinity purified from an animal origin-free culture supernatant
FORM:	Liquid
FORMULATION:	50% Glycerol/PBS with 1% BSA and 0.09% sodium azide
SPECIFICITY:	RM228 reacts to Human c-erbB-2/HER-2. This antibody may also react to mouse or rat c-erbB-2/HER-2, as predicted by immunogen homology.
STORAGE CONDITIONS:	For long term storage store at -20°C in small aliquots to prevent freeze-thaw cycles
DESCRIPTION:	HER2 gene encodes a cell-surface glycoprotein tyrosine kinase receptor with extensive homology to the epidermal growth factor receptor. HER2 is an oncogene and overexpression of unaltered HER2 coding sequences in NIH 3T3 cells results in cellular transformation and tumorigenesis. HER2 is amplified in about 30% of primary human breast malignancies and overexpression of HER2 is associated with the most aggressive tumors that show uncontrolled proliferation, resistance to apoptosis and increased motility.
APPLICATION:	IHC: 1:100 dilution WB: 1:1000 dilution

Note: This information is only intended as a guide. The optimal dilutions must be determined by the user.



Immunohistochemical staining of formalin fixed and paraffin embedded human breast cancer tissue sections using Anti-HER2 (c-erbB-2) Rabbit Monoclonal antibody



Western Blot of MCF-7, PC3, Jurkat, and A375 cell lysates using HER2 monoclonal antibody, showed a band of Her2 expressed only in MCF-7 cells

RELATED PRODUCTS:

- HER2, Active (**Cat. No. 7762-10, -100**)
- HER2/ErbB2 Antibody (**Cat. No. 3783-100**)
- Human CellExp™ ErbB2 / HER2 / CD340, human recombinant (**Cat. No. 7397-10**)
- Human CellExp™ HER1/ErbB1, human recombinant (**Cat. No. 7396-10**)
- EGF Receptor, human recombinant (**Cat. No. 7135-10, -50**)
- ErbB4/HER4 (His Tagged), Human Recombinant (**Cat. No. 7773-5**)

FOR RESEARCH USE ONLY! Not to be used on humans.