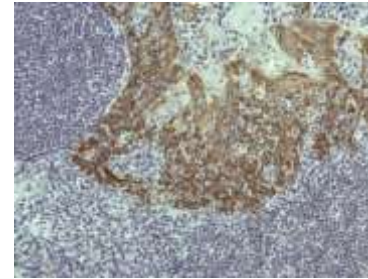


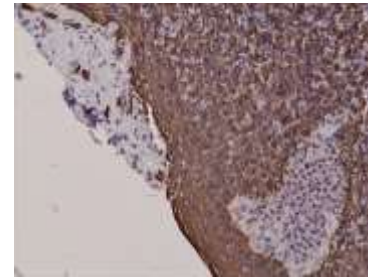
## Anti-Cytokeratin 5, Rabbit Monoclonal Antibody

<b>CATALOG NO:</b>	A1136-50
<b>ALTERNATIVE NAMES:</b>	Keratin type II cytoskeletal 8, Cytokeratin-8, CK-8, Keratin-8, K8, KRT8, CYK8, KO, CK8, K2C8, CARD2
<b>AMOUNT:</b>	50 µl
<b>CLONE:</b>	RM226
<b>IMMUNOGEN:</b>	A peptide corresponding to the C-terminus of Human Cytokeratin 5
<b>HOST/ISOTYPE:</b>	Rabbit IgG
<b>SPECIES REACTIVITY:</b>	Human
<b>PURIFICATION:</b>	Protein A affinity purified from an animal origin-free culture supernatant
<b>FORM:</b>	Liquid
<b>FORMULATION:</b>	50% Glycerol/PBS with 1% BSA and 0.09% sodium azide
<b>SPECIFICITY:</b>	This antibody reacts to human Cytokeratin 5. This antibody may also react to bovine, mouse, or rat Cytokeratin, as predicted by immunogen homology.
<b>STORAGE CONDITIONS:</b>	For long term storage store at -20°C in small aliquots to prevent freeze-thaw cycles
<b>DESCRIPTION:</b>	Keratin 8 (KRT8) belongs to the type B (basic) subfamily of high molecular weight keratins and exists in combination with keratin 18. Keratin 8 is primarily found in the non-squamous epithelia and is present in majority of adenocarcinomas and ductal carcinomas. It is absent in squamous cell carcinomas. Hepatocellular carcinomas are defined by the use of antibodies that recognize only cytokeratin polypeptides 8 and 18.
<b>APPLICATION:</b>	IHC: 1:100 dilution; WB: 1:1000 dilution

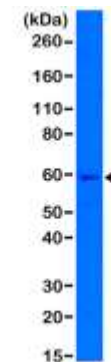
**Note:** This information is only intended as a guide. The optimal dilutions must be determined by the user.



Immunohistochemical staining of FFPE human tonsil tissue sections, using Anti-Cytokeratin 5 Rabbit Monoclonal antibody



Immunohistochemical staining of FFPE human tonsil tissue sections, using Anti-Cytokeratin 5 Rabbit Monoclonal antibody



Western Blot of A431 cell lysates using, Anti-Cytokeratin 5 Rabbit Monoclonal antibody showed a band of Cytokeratin 5 expressed in A431 cells.

### RELATED PRODUCTS:

- Keratin-8, human recombinant (Cat. No. 4817-5)

**FOR RESEARCH USE ONLY! Not to be used on humans.**