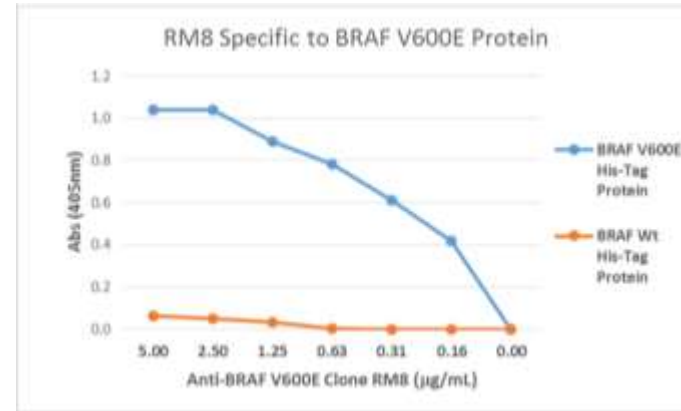


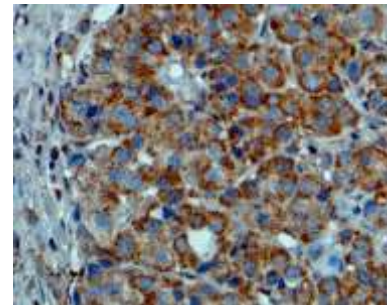
## Anti-BRAF V600E Rabbit Monoclonal Antibody

<b>CATALOG NO:</b>	A1137-25
<b>AMOUNT:</b>	25 µg
<b>CONCENTRATION:</b>	1 mg/ml
<b>CLONE:</b>	RM8
<b>IMMUNOGEN:</b>	A peptide corresponding to BRAF V600E mutant
<b>HOST/ISOTYPE:</b>	Rabbit IgG
<b>SPECIES REACTIVITY:</b>	Human
<b>PURIFICATION:</b>	Protein A affinity purified from an animal origin-free culture supernatant
<b>FORM:</b>	Liquid
<b>FORMULATION:</b>	50% Glycerol/PBS with 1% BSA and 0.09% sodium azide
<b>SPECIFICITY:</b>	This antibody reacts to the BRAF V600E mutant. No cross reactivity with wild type BRAF.
<b>STORAGE CONDITIONS:</b>	For long term storage store at -20°C in small aliquots to prevent freeze-thaw cycles
<b>DESCRIPTION:</b>	Serine/threonine-protein kinase B-raf (BRAF) is a member of the Raf family. BRAF mutations are frequent in benign and malignant human tumors. BRAF V600E mutation accounts for the vast majority of BRAF alterations and the mutation induces a conformational change of the activation segment leading to a constitutive kinase activity of BRAF and consecutive phosphorylation of downstream targets. BRAF V600E mutation have been detected in melanoma, papillary thyroid carcinoma, pleomorphic xanthoastrocytomas, Langerhans cell histiocytosis, borderline ovarian cancer, ganglioglioma, colorectal carcinoma, and pilocytic astrocytoma.
<b>APPLICATION:</b>	IHC, ICC: 2 – 10 µg/mL; ELISA: 0.5 – 2 µg/mL; WB: 0.5 – 2 µg/mL

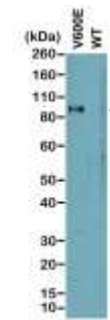
**Note:** This information is only intended as a guide. The optimal dilutions must be determined by the user.



Sandwich ELISA performed on the lysates of 293T cells overexpressing BRAF V600E or BRAF wild type His-tag proteins, shows the specificity of antibody to the V600E mutation. His-tag fusion proteins were captured by an Anti-HisTag antibody



Immunohistochemical staining of formalin fixed and paraffin embedded melanoma tissue sections.



Western Blot analysis of cell lysates prepared from cell lines expressing endogenous mutant (V600E) BRAF or wild type (WT) protein.

### RELATED PRODUCTS:

- HMGB1 Antibody (Cat. No. A1005-50)
- Sox-2 Antibody (Clone # 57CT23.3.4) (Cat. No. 6772-100)

FOR RESEARCH USE  
**BioVision** used  
on humans.

08/16

For research use only

