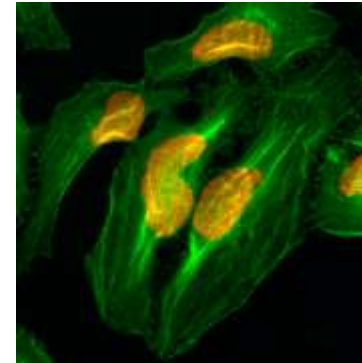


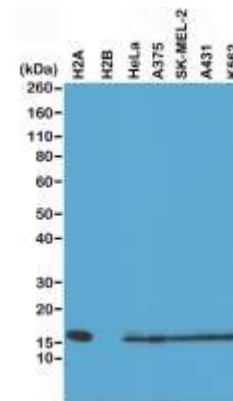
Anti-Histone H2A, Rabbit Monoclonal Antibody

CATALOG NO:	A1145-25
ALTERNATIVE NAMES:	Histone H2A type 1-B/E, Histone H2A.2, Histone H2A/a, Histone H2A/m
AMOUNT:	25 µg
CONCENTRATION:	1 mg/ml
CLONE:	RM225
IMMUNOGEN:	A peptide corresponding to the C-terminus of human Histone H2A
HOST/ISOTYPE:	Rabbit IgG
SPECIES REACTIVITY:	Human
PURIFICATION:	Protein A affinity purified from an animal origin-free culture supernatant
FORM:	Liquid
FORMULATION:	50% Glycerol/PBS with 1% BSA and 0.09% sodium azide
SPECIFICITY:	This antibody reacts to the Histone H2A protein, independent of post-translational modifications. No cross reactivity with other histone proteins.
STORAGE CONDITIONS:	For long term storage store at -20°C in small aliquots to prevent freeze-thaw cycles
DESCRIPTION:	Core component of nucleosome. Nucleosomes wrap and compact DNA into chromatin, limiting DNA accessibility to the cellular machineries which require DNA as a template. Histones thereby play a central role in transcription regulation, DNA repair, DNA replication and chromosomal stability. DNA accessibility is regulated via a complex set of post-translational modifications of histones, also called histone code, and nucleosome remodeling.
APPLICATION:	Western Blot: 0.5 µg/mL – 2 µg/mL ICC: 1 µg/mL - 2 µg/mL ELISA: 0.2 µg/mL - 1 µg/mL Multiplex: 0.2 µg/mL – 1 µg/mL

Note: This information is only intended as a guide. The optimal dilutions must be determined by the user.



Immunocytochemistry of HeLa cells, using Histone H2A Rabbit mAb (red). Actin filaments have been labeled with fluorescein phalloidin (green).



Western Blot of recombinant Histone H2A, H2B, the whole cell lysates of HeLa, A375, SK-MEL-2, A431, and K562, using H2A Rabbit mAb at 0.5 µg/mL

RELATED PRODUCTS:

- Histone H2A (1-129 aa), Xenopus recombinant (Cat. No. 7668-100)
- Histone H2A Antibody (Cat. No. 3621-100)
- Histone H2A Blocking Peptide (Cat. No. 3621BP-50)
- Histone H2A Peptide (Cat. No. 7145-1)
- Histone H2AX Antibody (Cat. No. 3761-100)
- H2Apan polyclonal antibody (Cat. No. 6823-25)
- Acetyl-Histone H2A Antibody (Cat. No. 3653-100)

FOR RESEARCH USE ONLY! Not to be used on humans.